

TF 600VK TrayMatic

Parts Illustrations



A **DOVER** COMPANY

The following are the standard illustrations and parts lists for a TF 600VK machine. Not all parts or illustrations shown apply to your specific machine. A set of prints, or inserts, unique to your machine will be created and mailed to you as soon as we complete them.

Proud manufacturers of the following packaging machinery lines:

SWF Machinery • Dyna-Pak • McDowell • Padlocker • Salwasser • Tri-Sterling • Yakima Wire

1949 E Manning Ave • Reedley, CA 93654 • Tel. (559) 638-8484 • Fax. (559) 638-7478 • Toll Free (800) 344-8951

Web: www.swfcompanies.com

© 2005 By SWF Companies, Inc.

This copyrighted document is the property of the SWF Companies Inc. and all rights are reserved. Use of the document is licensed to the designated Licensee solely in connection with the operation of the SWF machine referenced in this document. Dissemination to any third party, or other unauthorized use of any portion of this document, or of the information contained herein, is strictly prohibited. ®

Table of Contents

Table of Contents	3
Spare Parts Ordering	5
Safety	7
Equipment Safety	7
Guards	7
Emergency Stop.....	7
Power Disconnect.....	8
Precautions and Warnings	8
Lockout Information.....	9
Main Power Panel.....	9
Power Disconnect Switch	9
Safety Features	9
Parts Illustrations.....	10
Adhesive Applicator Pump Assembly:	10
Adhesive Melt Pot Assembly	12
Blank Bottom Stop Assembly	14
Blank Feed Roll and Programmer Assembly	16
Compression Chamber Assembly	18
Feed Post Shaft Assembly:	22
Mandrel Assembly	24
Mandrel Carriage Assembly.....	26
Mandrel Guide Rail Assembly.....	28
Minor Flap Folding Plow Assembly	30
Pinion Shaft Assembly	32
Take-Up Chain Idler Assembly:.....	34
Transmission Gear Shaft Assembly:.....	36
Vacuum Feed Cup Mounting Assembly	38
Vacuum Feed Drive Mechanism Assembly:.....	40
Vacuum Feed Frame Assembly	42
Vacuum Feed Linkage Assembly.....	44
Vacuum Feed Manifold and Blower Assembly:.....	46
Vacuum Feed Slide Bearing Assembly	48
Vertical Guides and Hopper Assembly	50
Master Parts List.....	52

Thank you for choosing packaging equipment from SWF Companies.



The equipment you purchased will provide years of productive service, producing a high return on your investment. Your equipment was thoroughly tested for proper operation prior to shipment.

Before unpacking and installing your new equipment, please read this manual. It is your guide to safe installation, productive operation, and effective maintenance. We recommend you keep this manual available for future reference.

Be aware that our commitment to you does not end with your purchase. That is just the beginning. The safe and efficient operation of your SWF equipment is very important to us as a machine manufacturer.

Training and parts distribution are an integral part of our business. SWF service technicians have spent months of in-plant hands-on training, prior to servicing our worldwide installations. Their expertise on our equipment is as close as your telephone. Given sufficient notice, service technicians are available for dispatch to your installation. We also maintain an extensive inventory of spare parts. We typically can have the parts you need in your plant the next working day.

The entire family of SWF Companies, a Dover Diversified Company is committed to the success of your operation and thanks you again. Feel free to call us anytime.

SWF Companies is committed to providing product manuals that meet the needs of its valued customers. We invite you to offer suggestions for continued improvement of this manual.

<p>To contact SWF Companies, Inc. Parts and Service</p> <p>Local(559) 638-8484</p> <p>Toll-Free.....(800) 344-8951</p> <p>Fax.....(559) 638-7478</p>	<p>Published by:</p> <p>SWF Companies, Inc.</p> <p>1949 E Manning Ave</p> <p>Reedley, CA 93654</p> <p>2003</p>
--	--

Spare Parts Ordering

For General Information and Ordering Parts Contact:



1949 E Manning Ave • Reedley, CA 93654
Tel. (559) 638-8484 • Fax. (559) 638-7478 • (800) 344-8951
Web: www.swfcompanies.com

Before contacting SWF Companies for parts or service, please know the machine model and serial number of your equipment. Locate the serial number, usually noted on a metal tag riveted to the frame. You need this serial number when ordering parts:

- 1) Included with this manual is a complete set of assembly drawings to assist you in locating your part. Locate the assembly the part is ordered for.
- 2) Once you have the assembly drawing, locate the item number of the part you want to order and write down the part number from the bill of materials.
- 3) When calling the SWF Companies for parts, have the following information ready:
 - (a) Machine model and serial number (Example: CE-300 TA, s/n CG00001).
 - (b) The assembly drawing number and description (CG-000150, vacuum lift arm).
 - (c) The item number, part number and description (item #16, 201806, male rod end bearing).

Following the above procedure assists us in supplying you with the correct parts for your machine and eliminates misunderstandings between your purchasing agent and our parts department.

The contact information below may be subject to change. Please refer to our website at: www.swfcompanies.com/cs1.html for updated service department information.

General Information

1949 E Manning Ave • PO Box 548 • Reedley, CA 93654
559-638-8484 • 559-638-7478 (Fax)
800-344-8951 (USA Toll Free)
Web: www.swfcompanies.com

Parts Sales Department

800-344-8951 (USA Toll Free)
559-638-7478 (Fax)
parts@swfcompanies.com

Technical Service

559-638-8484 ♦ 559-638-7478 (Fax)
800-344-8951 (USA Toll Free)
Service and Support 24/7 Mobile: 559-250-6046

Marty Silveiria, Keith Henvit, Alan Eastep

Machine Upgrades and Conversions

1949 E Manning Ave ♦ PO Box 548 ♦ Reedley, CA 93654
559-638-8484 ♦ 559-638-7478 (Fax)
800-344-8951 (USA Toll Free)

Tim Gonzales: tgonzales@swfcompanies.com

Irene Hill: ihill@swfcompanies.com

Frank Blankenship: fblankenship@swfcompanies.com

Safety

Machinery can be hazardous if safety precautions are not followed. This section deals with safety rules and practices that **MUST** be followed for safe operation of the machinery and to prevent accidents from occurring. All operators and maintenance personnel working on or near SWF Companies' machinery should be fully informed and correctly supervised concerning safe and correct machine operation.

All equipment manufactured by SWF Companies is safety tested before shipping from the plant. Records of machine safety tests are filed at the plant. Safety equipment on SWF machines is also tested in the customer's plant when a SWF Service Representative assists in starting up newly installed machinery.

Be sure all supervisors read and fully understand the contents of the operation portion of this manual, with particular attention to safety precautions. Verify anyone working on or around the machine has read and fully understands the safety precautions noted throughout this manual.

- The responsibility for safe machine operation is shared among the employer, supervisor, operator, attendant, and all maintenance personnel working with the machine. Read the instructions. Re-read them periodically.
- Continually evaluate accident prevention procedures. This means ALL potential hazards must be identified, and eliminated or safeguarded. Along with creating safe conditions, all employees should follow safe practices.
- If any questions ever arise regarding the safe operation or maintenance of this machine, immediately contact:

SWF Companies
1949 E. Manning Ave
P.O. Box 548
Reedley, CA 93654-0548

Phone: 559-638-8484
Fax: 559-638-7478



Equipment Safety

SWF machinery uses many safety devices designed to prevent injury to personnel who come in contact with the machine. All safety switches and devices should be checked daily to ensure that they operate properly. Any removal or alteration of these devices can result in serious injury.

Guards

Guarding includes sheet metal fixed guards or transparent polycarbonate plastic. Hinged or sliding guard doors are installed in areas requiring easy access. Doors with safety interlocks automatically stop the machine by disconnecting the electrical power and dropping air from the machine when the door opens.

The electrical power and air pressure remain off until all guard doors are closed and the start-up sequence is followed.

Emergency Stop

Emergency stop controls or "E-STOP" is a lighted push/pull button installed on each operator control panel. The pulled-out (on) position allows for operation. The pushed-in (off) position of any e-stop button causes a complete machine shut-down by shutting off power and air to the machine.

The dump valve releases air pressure, causing the air pressure switch to open and shut off the master control relay. The machine remains shut down until all emergency stop buttons are reset and the start-up sequence is performed.



WARNING: Do not use the e-stops to prevent inadvertent starting of the machine. Always perform power and air lock out procedures on the main disconnect or designated auxiliary disconnect before reaching into the machine.

Power Disconnect

The DISCONNECT SWITCH or CIRCUIT BREAKER mounts on the main electrical cabinet and shuts off electrical power to the machine. There may be additional remote disconnect switches mounted elsewhere on the machine.

To open the electrical cabinet door, first move the disconnect switch to the **off** position.

WARNING: Always use the lockout feature of the disconnect switch to ensure the electrical power remains off during any maintenance or repair work.

Not all disconnect switches shut off all power. Some switches only shut-off power to a particular area or to certain components. Never assume any single disconnect switch shuts-off ALL power to the machine. Refer to the electrical schematics for specific information.



Precautions and Warnings

Injury or loss of limbs may result if this machine is improperly operated or maintained. Please note the following precautions:

- X-Ⓢ Never adjust, repair, clean, or clear a jam without turning the power off. To shut down the power, turn the disconnect switch to the off position and lock it in the off position.
- X-Ⓢ Do not operate this machine without the guards in place.
- X-Ⓢ Turn off the power before removing or opening any guards. Turning off the power means locking the power disconnect switch in the off position.
- X-Ⓢ Hot surfaces! Severe burns result from the improper handling of the hot melt glue system. Wear proper clothing and high temperature gloves when cleaning or repairing the hot melt glue system.
- X-Ⓢ Replace all broken or worn parts immediately. Check and tighten all bolts and screws.
- X-Ⓢ High voltage electrical equipment – authorized personnel only.
- X-Ⓢ Turn off the power when the machine is not in use.
- X-Ⓢ This machine starts automatically in the ‘auto’ position when the downstream control contact and/or time delay attachment is used.
- X-Ⓢ Always wear proper clothing during operation of heavy-duty machinery.

SWF Machinery endeavors to comply with OSHA standards. You, however, are the most important part of safe equipment operation. In order to provide for your safety, you should be knowledgeable and put into practice the following:

- ↪ Always know the purpose of the control buttons and selector switches before operating any equipment.
- ↪ Always test the emergency stop and a normal cycle stop buttons before operating this machine.

- ↪ Be familiar with the power off or disconnect procedure. This procedure includes turning off the power and locking the power disconnect switch in the off position.
- ↪ Always be aware of all moving parts and of the danger in putting hands or limbs in or around these areas.
- ↪ Note the high operating temperatures required in operating the glue system. Always wear gloves, goggles, and protective clothing when servicing the glue systems.

Lockout Information

Never attempt to adjust, repair, clean, or remove cases in a jam condition without stopping, powering down, and locking the machine out.

Main Power Panel

To lock out the power:

1. Push the red emergency stop button.
2. Rotate the disconnect switch to the “Off-Lock” position.
3. Under the disconnect switch, locate and push up the lock slide.
4. Insert a lock into the exposed squared area.
5. Test all buttons and try moving the switch to make sure power cannot be applied.

Power Disconnect Switch

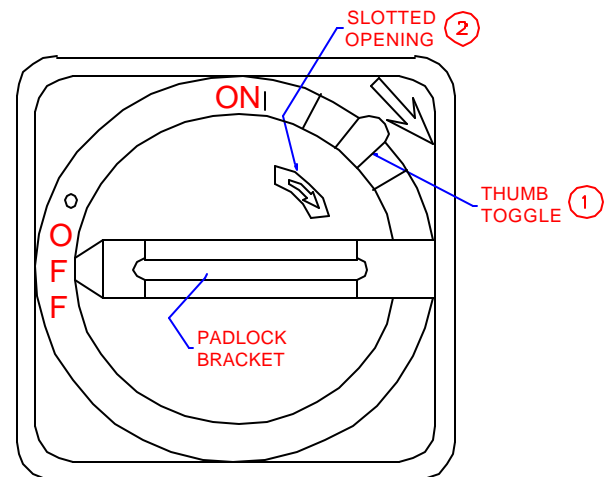
This switch must be in the ON position to operate the machine. Turn OFF when washing the machine or when making repairs or adjustments other than changeovers.

To open the control panel:

1. Twist the disconnect switch to the OFF position
2. Push down on the thumb switch (see figure 4, item 1) and slide the outer ring down
3. Pull open the door.

The power disconnect switch may be locked in the OFF position. To lockout the power, pull the black plastic bracket out from the handle and hook a padlock into the opening (in the off position only).

This prevents the power from being restored to the machine. For further instructions, refer to the documentation for the power lockout switch.



- ① OPENS DOOR WHILE DISCONNECT SWITCH IS IN THE OFF POSITION:
 1) PUSH DOWN ON THUMB SWITCH
 2) OPEN DOOR

Safety Features

The 1T4K Traymatic has been built with safety as a prime consideration. To protect personnel from moving parts, wire mesh guards are installed front and rear, over the mandrel and feed wheel areas. All mesh guards are prewired to halt the Traymatic when they are removed or not secured properly. A flashing amber strobe light indicates the machine is powered up and operational. The red “E” stop switch located on the main power panel is of the push/pull type and must be manually operated. This power panel also contains the lockable disconnect lever.

Parts Illustrations

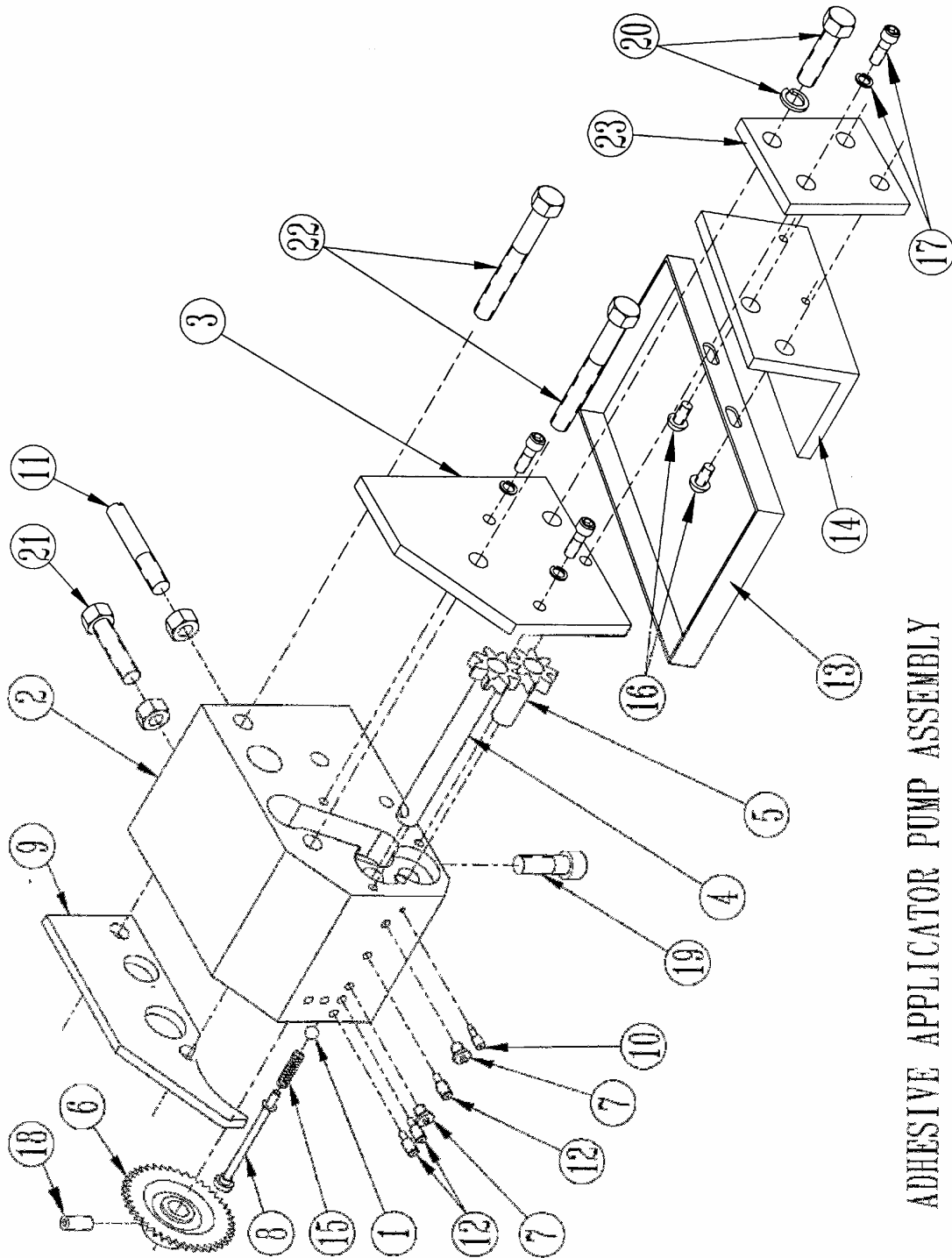
The following are the parts and illustrations for a standard TF 600VK. Not all machines will have these parts. For information specific to your machine, please refer to the supplementary (inserts) section you received after receiving your machine.

Adhesive Applicator Pump Assembly:

Item	Qty	Part No.	Description
1	1	G967E	7/32 DIA BALL, ADHESIVE APPLICATOR CHECK VALVE
2	1	G3143B R/L	HOUSING, ADHESIVE APPLICATOR PUMP
3	1	G3144 R/L	PLATE, ADHESIVE APPLICATOR HOUSING
4	1	G3145B	GEAR, ADHESIVE PUMP DRIVE
5	1	G3146A	GEAR, ADHESIVE PUMP IDLE
6	1	G3147	WHEEL, ADHESIVE PUMP DRIVE
7	2	G3148	JET, ADHESIVE APPLICATOR
8	1	G3149B	PLUG, ADHESIVE APPLICATOR CHECK VALVE SPRING
9	1	G3151D	SPACER, ADHESIVE APPLICATOR PUMP HOUSING
10	1	G3153	NEEDLE VALVE, ADHESIVE APPLICATOR VOLUME CONTROL
11	1	G3477	STUD, ADHESIVE APPLICATOR SUPPORT
12	3	G3665	SCREW, ADHESIVE APPLICATOR JET HOLE PLUG
13	1	G8232	PAN, ADHESIVE APPLICATOR DRIP (STANDARD)
	1	G8232A	PAN, ADHESIVE APPLICATOR DRIP (W/AUXILIARY & 1" PUMP TO AUXILIARY SPACERS)
	1	G8232B	PAN, ADHESIVE APPLICATOR DRIP (W/AUXILIARY ONLY)
	1	G8232C	PAN, ADHESIVE APPLICATOR DRIP (W/AUXILIARY & 2 1/2" PUMP TO AUXILIARY SPACERS)
14	1	G8233 R/L	ANGLE, DRIP PAN MOUNTING
15	1	GS152	SPRING, ADHESIVE APPLICATOR CHECK VALVE
16	2	-	#10-24 NC x 3/8 LONG, PAN HEAD SCREWS
17	3	-	#10-32 NF x 1/2 LONG, SOCKET HEAD SCREW W/ LOCKWASHER
18	1	-	1/4 NC x 1/4 LONG, SOCKET HEAD SET SCREW
19	1	-	5/16 NC x 1/2 LONG, SOCKET HEAD SCREW
20	1	-	5/16 NF x 1 LONG, HEX HEAD CAP SCREW W/LOCKWASHER
21	1	-	5/16 NF x 1 LONG, HEX HEAD CAP SCREW W/NUT
22	2	-	5/16 NC x 4 LONG, HEX HEAD CAP SCREW
23	1	G8424-00	EXTENSION, ADHESIVE PUMP DRIP PAN

NOTE: These parts may be purchased as a preassembled package. To order, specify BU160C, right or left.

Adhesive Applicator Pump Assembly:



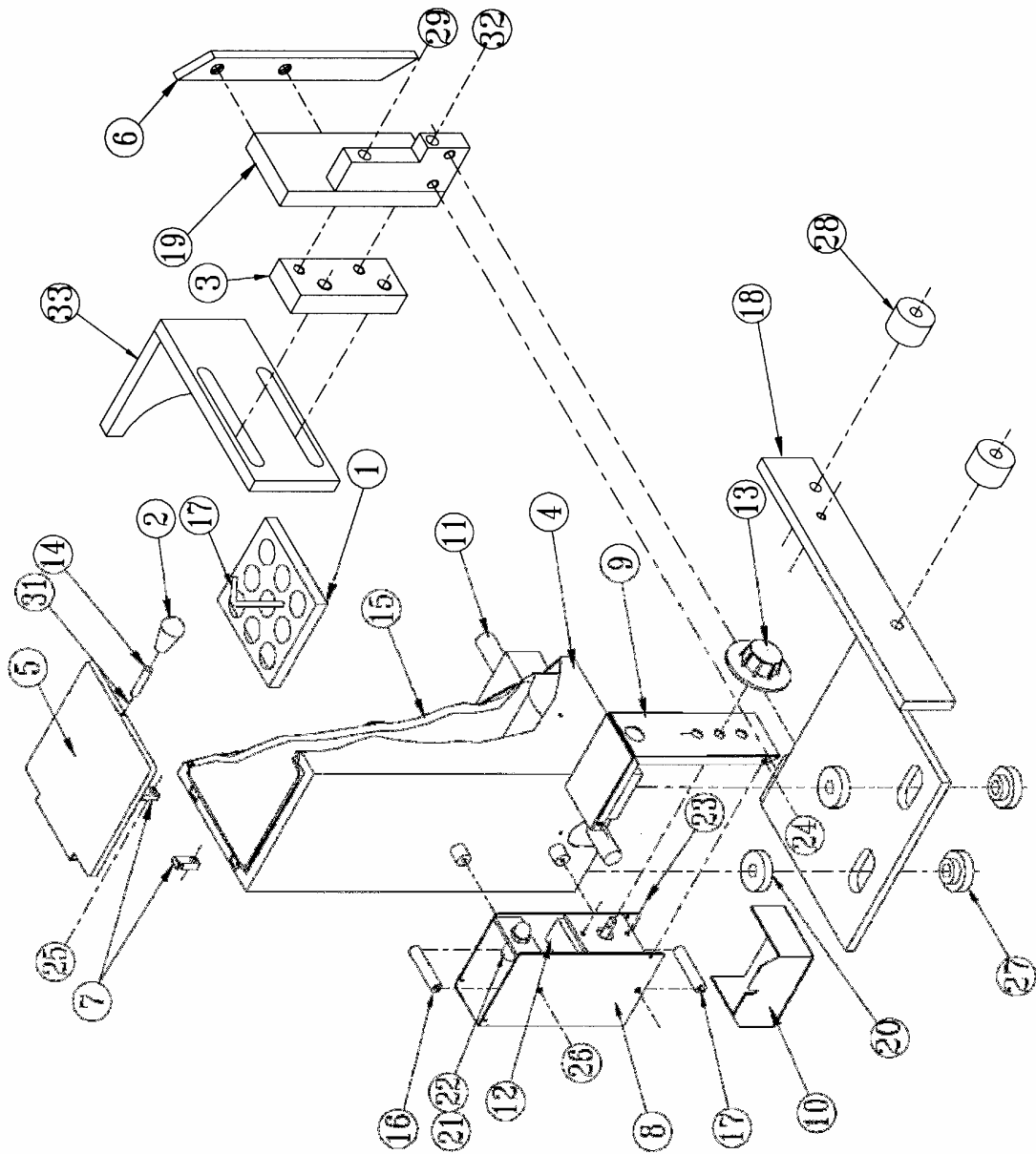
ADHESIVE APPLICATOR PUMP ASSEMBLY

Adhesive Melt Pot Assembly

Item	Qty	Part No.	Description
1	1	G2743	SCREEN, ADHESIVE MELT
2	1	G2758	KNOB, ADHESIVE MELT POT COVER
3	1	G7643A	SPACER, PROGRAM WHEEL BRACKET
4	1	G2781A	SHROUD, ADHESIVE MELT POT
5	1	G2782	COVER, ADHESIVE MELT POT
6	1	G3064 R/L	BAR, MELT POT CLAMP
7	2	G2853	HINGE, ADHESIVE MELT POT COVER
8	1	G2873B	BOX, THERMOSTAT CONTROL
9	1	G2874B	COVER, ADHESIVE MELT THERMOSTAT
10	1	G2936A	GUARD, THERMOSTAT WIRE
11	1	G2997 #	HEATER, ADHESIVE MELT POT
12	1	G2998B	THERMOSTAT, ADHESIVE MELT POT
13	-	G2998B-1	PART OF G2998B THERMOSTAT
14	1	G3067	STUD, MELT POT COVER
15	1	G3089A R/L	POT, ADHESIVE MELT
16	2	G3092	SPREADER, THERMOSTAT CONTROL BOX
17	1	G3508B	HANDLE, ADHESIVE MELT POT SCREEN
18	1	G7576A R/L	BRACKET, ADHESIVE SYSTEM MOUNTING
19	1	G8246 R/L	MOUNT, ADHESIVE MOUNTING BRACKET
20	2	G7574	WASHER, INSULATING
21	1	GV6A	LIGHT, INDICATOR ASSEMBLY
22	1	GV6B	LAMP, INDICATOR
23	2	-	#6-32 x 1/4 LONG, ROUND HEAD MACHINE SCREW
24	3	-	#8 x 1/4 LONG, PAN HEAD SCREW
25	2	-	#10-24 x 5/8 LONG, SOCKET HEAD CAP SCREW
26	2	-	#10-32 x 2 1/4 LONG, ROUND HEAD MACHINE SCREW
27	2	G7575	BUSHING, POT INSULATING
28	2	GE83	CAM FOLLOWER, BEARING 1" OD x 5/16" ID x .6875
29	2	-	5/16 UNC x 2" LONG, HEX HEAD CAP SCREW
30	2	-	5/16 UNC x 3/4" HEX HEAD CAP SCREW W/ LOCKWASHERS
31	1	-	#10-32 HEX NUT
32	1	-	5/16 UNC x 2 1/2" LONG, HEX HEAD CAP SCREW
33	1	G7650 R/L	BRACKET, PROGRAM WHEEL ADJUSTING

(#) Variable part - order by manufacturer's number on heater, and length.

Adhesive Melt Pot Assembly

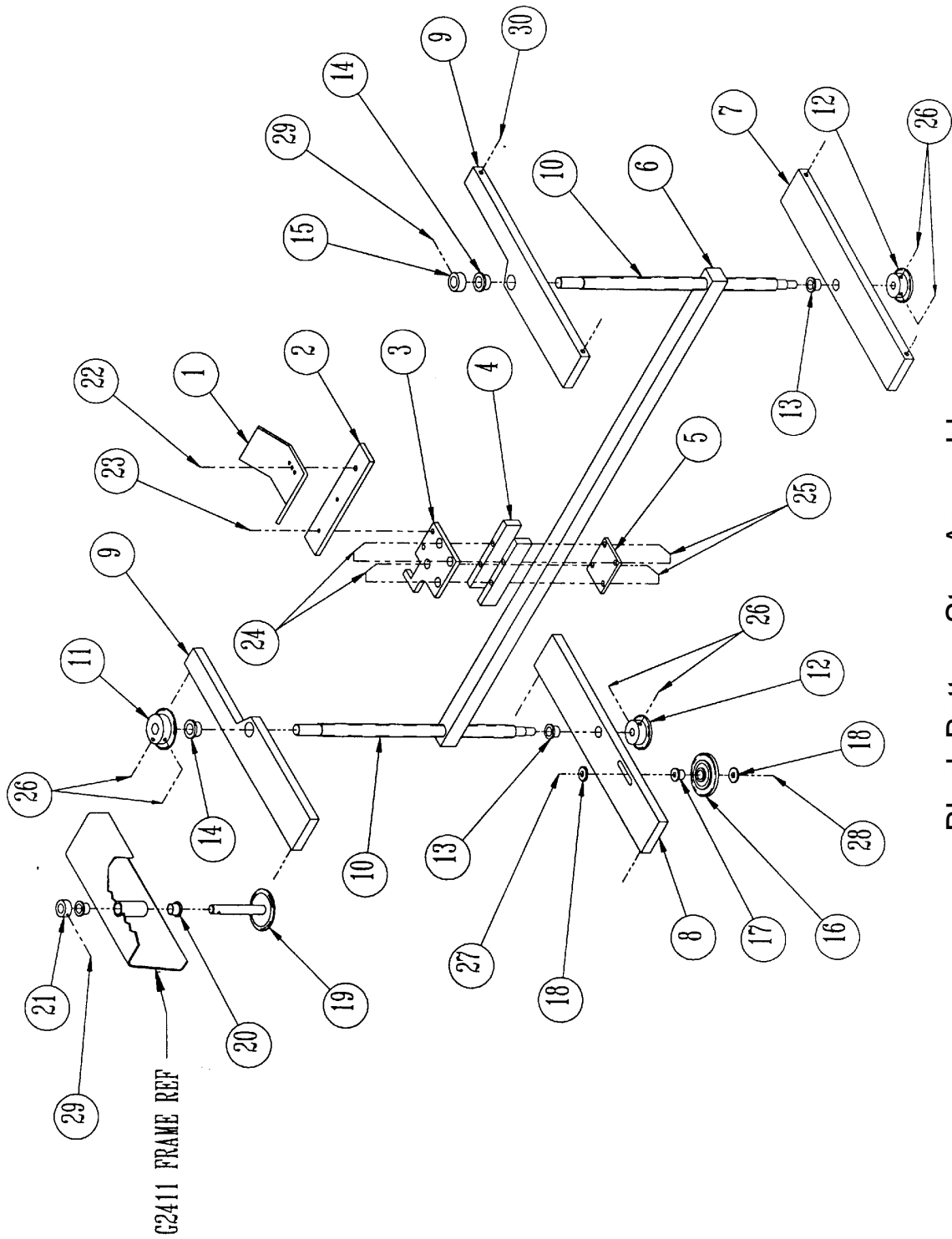


ADHESIVE MELT POT ASSEMBLY

Blank Bottom Stop Assembly

Item	Qty	Part No.	Description
1	1 EA	G3465A R/L	STOP, TRAY BOTTOM
2	2	G3565	EXTENSION, BLANK STOP BRACKET
3	1 EA	G7568 R/L	STOP, BOTTOM
4	4	G7567	BAR, BOTTOM STOP MOUNTING
5	2	G7566	PLATE, BOTTOM STOP RETAINER
6	1	G7572	BAR, BOTTOM STOP SUPPORT
7	1	G7569	BRACKET, BOTTOM STOP ADJUSTING SCREW - BOTTOM RIGHT
8	1	G7569A	BRACKET, BOTTOM STOP ADJUSTING SCREW - BOTTOM LEFT
9	2	G7570	BRACKET, BOTTOM STOP ADJUSTING SCREW - TOP
10	2	G7571	SCREW, BOTTOM STOP ADJUSTING
11	1	G7564	SPROCKET, BOTTOM STOP DRIVE
12	2	G7115	SPROCKET, ADJUSTING
13	2	GB413	BUSHING, FLANGE-ADJ SCREW(TOP) 3/4 OD X 5/8 ID X 5/8 LONG
14	2	GB511	BUSHING, FLANGE-ADJ SCREW(BOT) 1 1/4 ODX 3/4 IDX 5/8 LONG
15	1	GA9	SET COLLAR, 3/4 DIA - RIGHT ADJ SCREW
16	1	GC9B	IDLER SPROCKET
17	1	G3377A	AXLE, ADJUSTMENT SPROCKET IDLER
18	2	GW1A	WASHER, ADJUSTMENT SPROCKET IDLER
19	1	G7563	SPROCKET, BOTTOM STOP ADJUSTING
20	2	GB413	BUSHING, FLANGE-ADJ SPROCKET 3/4 OD X 5/8 ID X 5/8 LONG
21	1	GA8	SET COLLAR, 5/8 DIA - ADJUSTING SPROCKET
22	1	-	5/16-18 x 1/2 LONG, SOCKET HEAD CAP SCREW
23	1	-	5/16-18 x 3/4 LONG, SOCKET HEAD CAP SCREW
24	4	-	5/16-18 x 2 1/2 LONG, FLAT HEAD CAP SCREW
25	4	-	5/16-18 HEX NUT
26	4	-	5/16-18 x 1/2 LONG, SET SCREW
27	1	-	3/8-16NC X 2 1/2 LONG HEX HEAD BOLT
28	2	-	3/8-16NC HEX NUT
29	2	-	5/16-18 x 1/4 LONG, SET SCREW
30	8	-	3/8-16NC X 1 1/4 LONG HEX HEAD BOLT

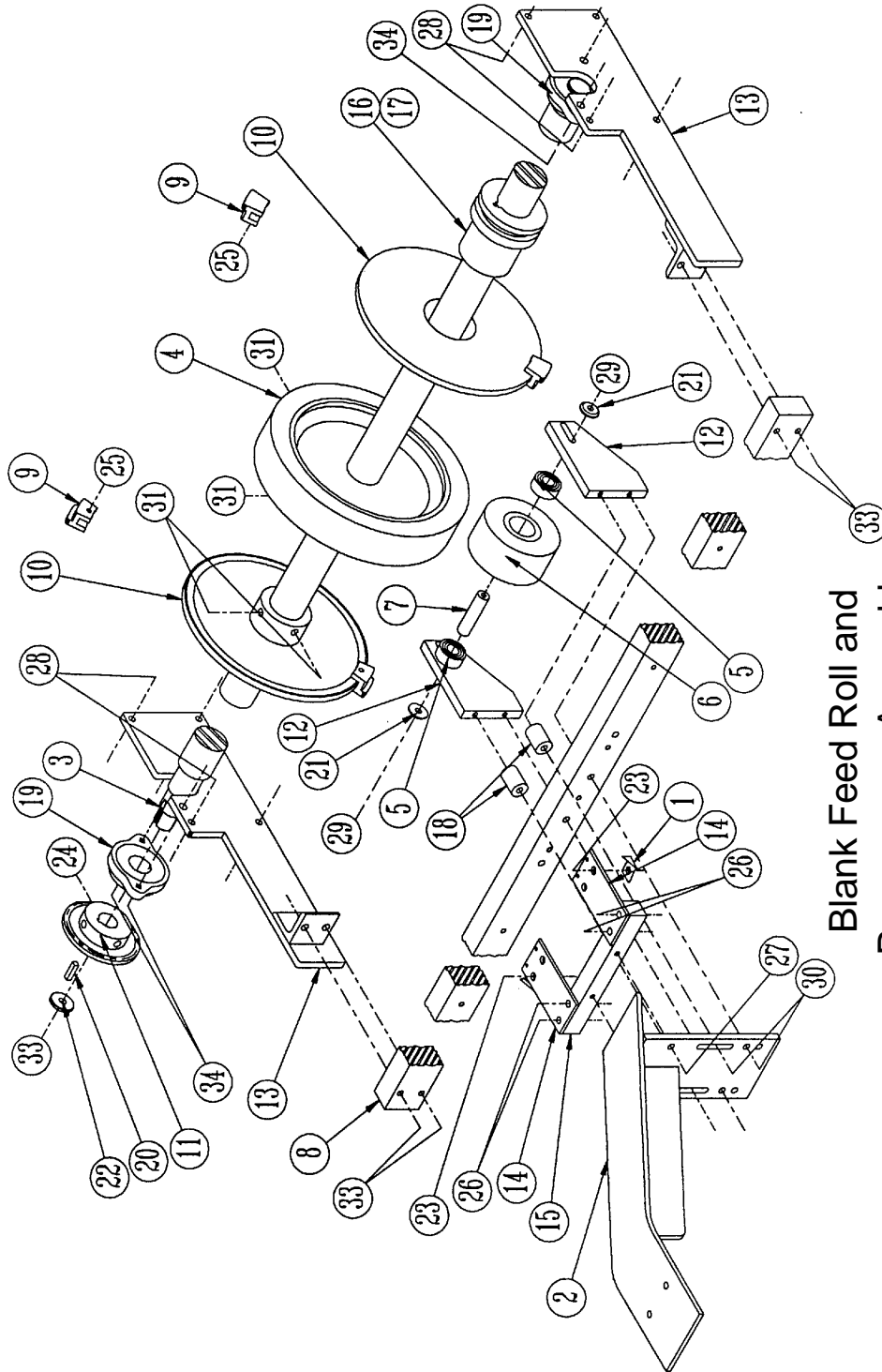
Blank Bottom Stop Assembly



Blank Feed Roll and Programmer Assembly

Item	Qty	Part No.	Description
1	2	G1562BR	KNIFE, BLANK SUPPORT
2	1	G2746E	SUPPORT, BLANK HOPPER LOADING
3	1	G7655	SHAFT, BLANK FEED WHEEL
4	1	G2906B	WHEEL, BLANK FEED
5	2	GE38	BEARING, BLANK FEED IDLE ROLL
6	1	G2908	ROLLER, BLANK FEED IDLE
7	1	G2911A	SHAFT, BLANK FEED IDLE ROLLER
8	1	G2999E	BAR, BLANK FEED IDLE ROLLER MOUNT
9	*	G3028B	SEGMENT, ADHESIVE PROGRAM (* Quantity as required)
10	2	G7664	DISC, INTERMITTENT ADHESIVE APPLICATOR PROGRAM
11	1	G7804	SPROCKET, VACUUM FEED DRIVE, 4:1, 6:1
12	2	G7638	MOUNT, BLANK FEED IDLE ROLL
13	2	G7662 R/L	PLATE, FEED WHEEL MOUNTING
14	2	G7906	PLATE, HOPPER BOTTOM STOP
15	1	G7907	BAR, HOPPER BOTTOM STOP PLATE
16	2	G8243	HUB, PROGRAM WHEEL MOUNTING
17	2	G7645	KEY - PROGRAM WHEEL
18	2	GB76	SPACER, IDLER ROLL MOUNT
19	1	GE70A	BEARING, BLANK FEED ROLL DRIVE SHAFT
20	1	GJ10A	KEY 1/4 x 1/4 x 1" LONG
21	1	GW1B	WASHER, 1" OD x 5/16" ID x 5/32" THICK
22	1	GW12	WASHER, 1 1/4" OD x 25/64" ID x 3/16" THICK
23	2	-	#10-24 NC x 3/4 LONG, FLAT HD SKT SCREW NUT/LOCKWASHER
24	1	-	1/4 NC x 1/2 LONG, SOCKET SET SCREW
25	*	-	5/16 x 5/16" SET SCREW (* Quantity as required)
26	4	-	5/16 x 3/4 LONG, HEX HEAD CAP SCREW
27	2	-	5/16 x 1 LONG, HEX HEAD CAP SCREW
28	4	-	5/16 NC x 1 LONG, HEX HEAD CAP SCREW W/NUT & LCKWSHR
29	2	-	5/16 NC x 1 1/4 LONG, HEX HEAD CAP SCREW
30	2	-	5/16 NC x 2 LONG, HEX HEAD CAP SCREW
31	2	-	3/8 NC x 1/2 LONG, SOCKET SET SCREW FLAT POINT
32	1	-	3/8 NC x 3/4 LONG, HEX HEAD CAP SCREW W/LOCKWASHER
33	4	-	3/8 NC x 1 1/4 LONG, HEX HEAD CAP SCREW W/ LOCKWASHER
34	4	-	3/8 NC x 1 3/4 LONG, CARRIAGE BOLT W/NUT & LOCKWASHER

Blank Feed Roll and Programmer Assembly



Blank Feed Roll and
Programmer Assembly

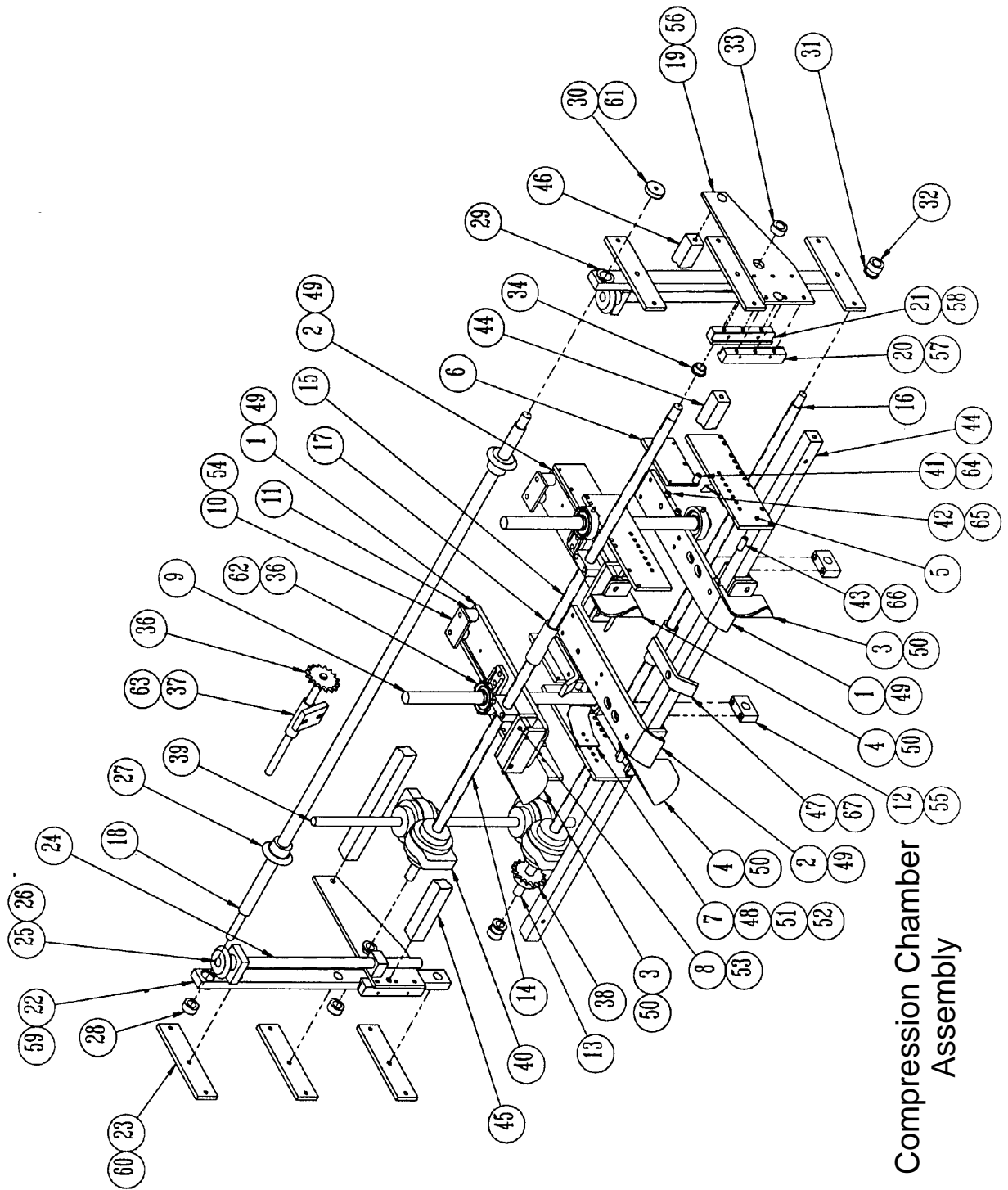
Compression Chamber Assembly

Item	Qty	Part No.	Description
1	2	G2785H L	SHOE, TRAY FORMING
2	2	G2785H R	SHOE, TRAY FORMING
3	2	G2927C R	PLOW, INNER FLAP FORMING
4	2	G2927C L	PLOW, INNER FLAP FORMING
5	4	G2933C	SHOE, TRAY FORMING SIDE
6	4	G3514A	PLATE, TRAY COMPRESSION EXTENSION
7	4	G2879A	PAWL, TRAY STRIPPER
8	4	G3566	BAR, FORMING SHOE CLAMP
9	2	G7604	ROD, TRAY FORM COMPRESSION
10	2	G7615	CAP, TOP COMPRESSION SUPPORT
11	4	G7616	SPACER, TOP COMPRESSION SHOE SUPPORT
12	4	G7617	BLOCK, COMPRESSION SHOE ADJUSTMENT
13	1	G7625	SCREW, BOTTOM LEFT SIDE COMPRESSION ADJUSTMENT
14	1	G7626	SCREW, TOP LEFT SIDE COMPRESSION ADJUSTMENT
15	1	G7628	SCREW, TOP RIGHT SIDE COMPRESSION ADJUSTMENT
16	1	G7607	SCREW, BOTTOM RIGHT SIDE COMPRESSION ADJUSTMENT
17	2	G7668	COUPLING, ADJUSTMENT SCREW
18	1	G7623	SHAFT, TOP COMPRESSION ADJUSTMENT
19	1EA	G7629R/L	PLATE TOP COMPRESSION SUPPORT
20	4	G7649	BAR, GIB HOLDER
21	4	G7642	WEAR STRIP, GIB HOLDER BAR
22	2	G7630	BAR, TOP COMPRESSION PLATE GUIDE
23	6	G7644	BRACKET, GUIDE BAR MOUNTING
24	1EA	G7624R/L	SCREW, TOP COMPRESSION ADJUSTMENT
25	2	G7676	WASHER, THRUST
26	2	GB512	BUSHING
27	2	G7621	GEAR, TOP COMPRESSION ADJUSTMENT
28	1	GA11	SET COLLAR
29	1	GB512	BUSHING
30	1	GW62	WASHER
31	2	GB511	BUSHING
32	2	GA9	SET COLLAR
33	2	GA9	SET COLLAR
34	2	GB53	BUSHING
35	4	GE65A	BEARING, COMPRESSION SHAFT
36	1	G7612	SPROCKET, COMPRESSION ADJUSTMENT
37	1	G7620	BEARING, SIDE COMPRESSION CRANK
38	1	G7669	SPROCKET, COMPRESSION ADJUSTMENT
39	2	G7619	SHAFT, SIDE COMPRESSION ADJUSTING
40	2	G7675	TOLOMATIC FLOAT-A-SHAFT
41	4	GB475	BUSHING
42	8	GB53	BUSHING
43	4	GB474	BUSHING
44	2	G2430E	SPREADER, TRANSMISSION PLATE
45	1	G7670	BAR, TOP COMPRESSION SUPPORT (FRONT)
46	1	G7622	BAR, TOP COMPRESSION SUPPORT (REAR)

47	2	G3054A	SHOE, CENTER TRAY FORMING
48	4	GS108	SPRING, STRIPPER PAWL
49	8	-	5/16-18 X 3/4" LONG, HEX HEAD BOLT W/ FLAT WASHER
50	4	-	5/16-18 X 1 1/4" LONG, HEX HEAD BOLT W/ FLAT WASHER
51	4	-	1/4-28 X 1" LONG, BUTTON HEAD ALLEN SCREW W/ ELASTIC LOCKWASHER
52	4	-	1/4-20 X 1 3/4" LONG, SCH CAP SCREW W/ ELASTIC LOCK NUT
53	8	-	5/16-18 x 1" LONG, HEX HEAD BOLT W/FLAT WASHER
54	4	-	3/8-16 x 1 1/2" LONG, HEX HEAD BOLT W/FLAT WASHER
55	8	-	3/8-16 x 2" LONG, HEX HEAD BOLT W/LOCKWASHER & HEX NUT
56	4	-	7/16-14 X 1" LONG, FLAT HEAD ALLEN SCREW
57	12	-	3/8-16NC x 1 1/4" LONG, HEX HEAD BOLT W/LOCKWASHER
58	8	-	10-24 x 1 1/4" LONG, FLAT HEAD SCREW W/LOCKWASHER & HEX NUT
59	6	-	3/8-16 x 1 1/2" LONG FLAT HEAD ALLEN SCREW W/LOCKWASHER & HEX NUT
60	12	-	3/8-16NC x 1" LONG, HEX HEAD BOLT W/LOCKWASHER & HEX NUT
61	2	-	5/16-18 x 1" LONG, HEX HEAD BOLT W/LOCKWASHER
62	2	-	3/8-16 x 1" LONG, HEX HEAD BOLT W/FLAT & LOCK WASHER
63	2	-	5/16-18 x 1 1/4" LONG, HEX HEAD BOLT W/FLAT WASHER & HEX NUT
64	2	-	1/4-20 X 2 1/4" LONG, SCH CAP SCREW W/ LOCKWASHER
65	4	-	1/4-20 X 1 1/4" LONG, SCH CAP SCREW W/ LOCKWASHER
66	1	-	1/4-20 X 2 1/4" LONG, SOCKET HEAD CAP SCREW
67	1	-	5/6-18 x 3/4" LONG, FLAT HEAD ALLEN SCREW

See next page.

Compression Chamber Assembly

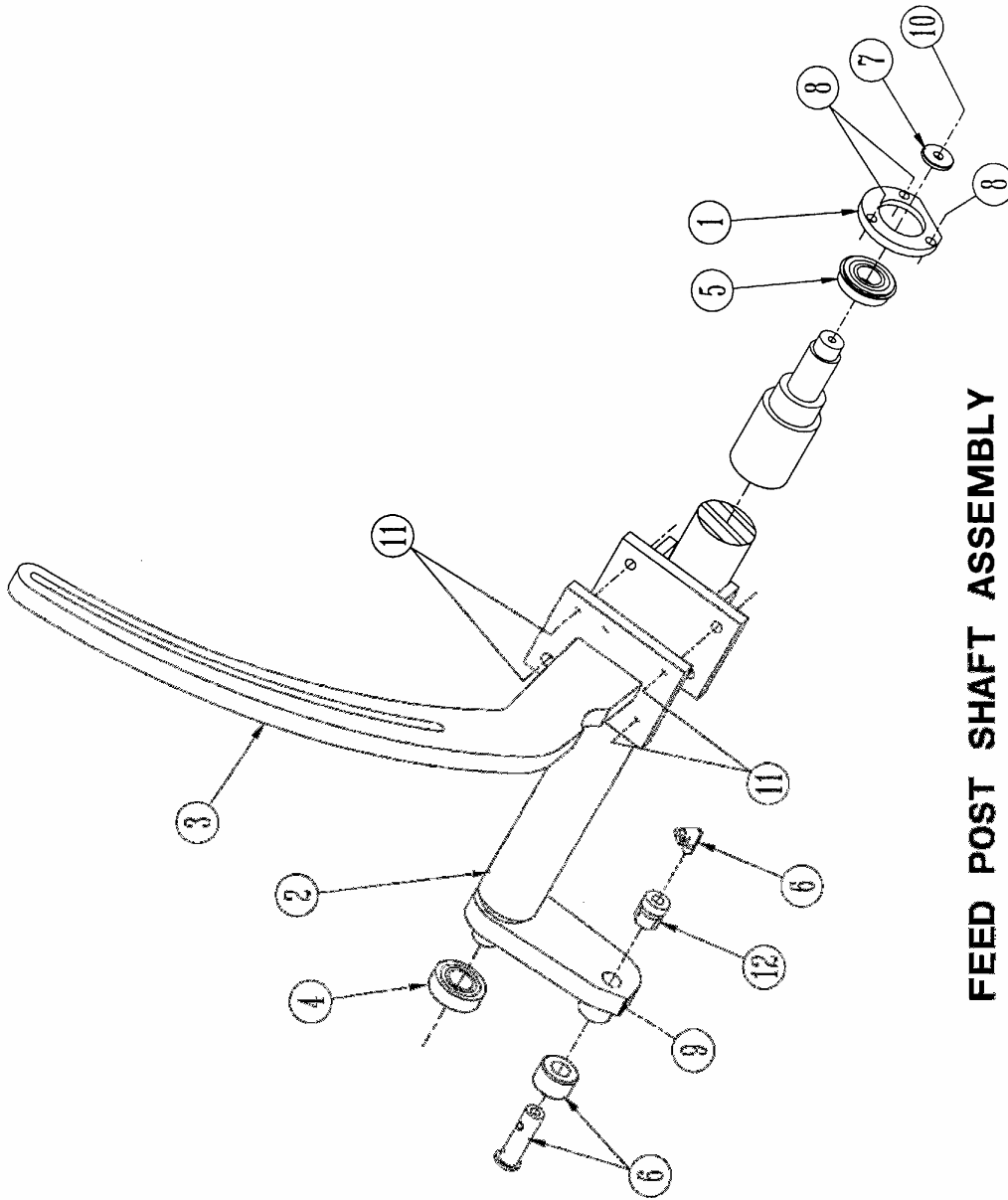


Compression Chamber Assembly

Feed Post Shaft Assembly:

Item	Qty	Part No.	Description
1	1	G2444	RING, BEARING CLAMP
2	1	G4861	SHAFT, MANDREL CRANK ARM
3	1	G7587	FEED POST, MANDREL
4	1	GE13	BEARING, FEED POST SHAFT R.H.
5	1	GE13A	BEARING, FEED POST SHAFT L.H.
6	1	GE43C	CAM FOLLOWER ROLLER, FEED POST
7	1	GW12	WASHER, 1 1/4 OD x 3/8 ID x 3/16 LONG
8	3	-	1/4 NC x 1/2 LONG, SOCKET HEAD CAP SCREW
9	1	-	5/16 NC x 3/4 LONG, HEX HEAD CAP SCREW (CUP POINT)
10	1	-	3/8 NC x 1 LONG, HEX HEAD CAP SCREW W/LOCKWASHER
11	4	-	1/2 NC x 1 1/4 LONG, HEX HEAD CAP SCREW W/ LOCKWASHER
12	1	G8712	CULLET, CAM FOLLOWER MTG.

Feed Post Shaft Assembly

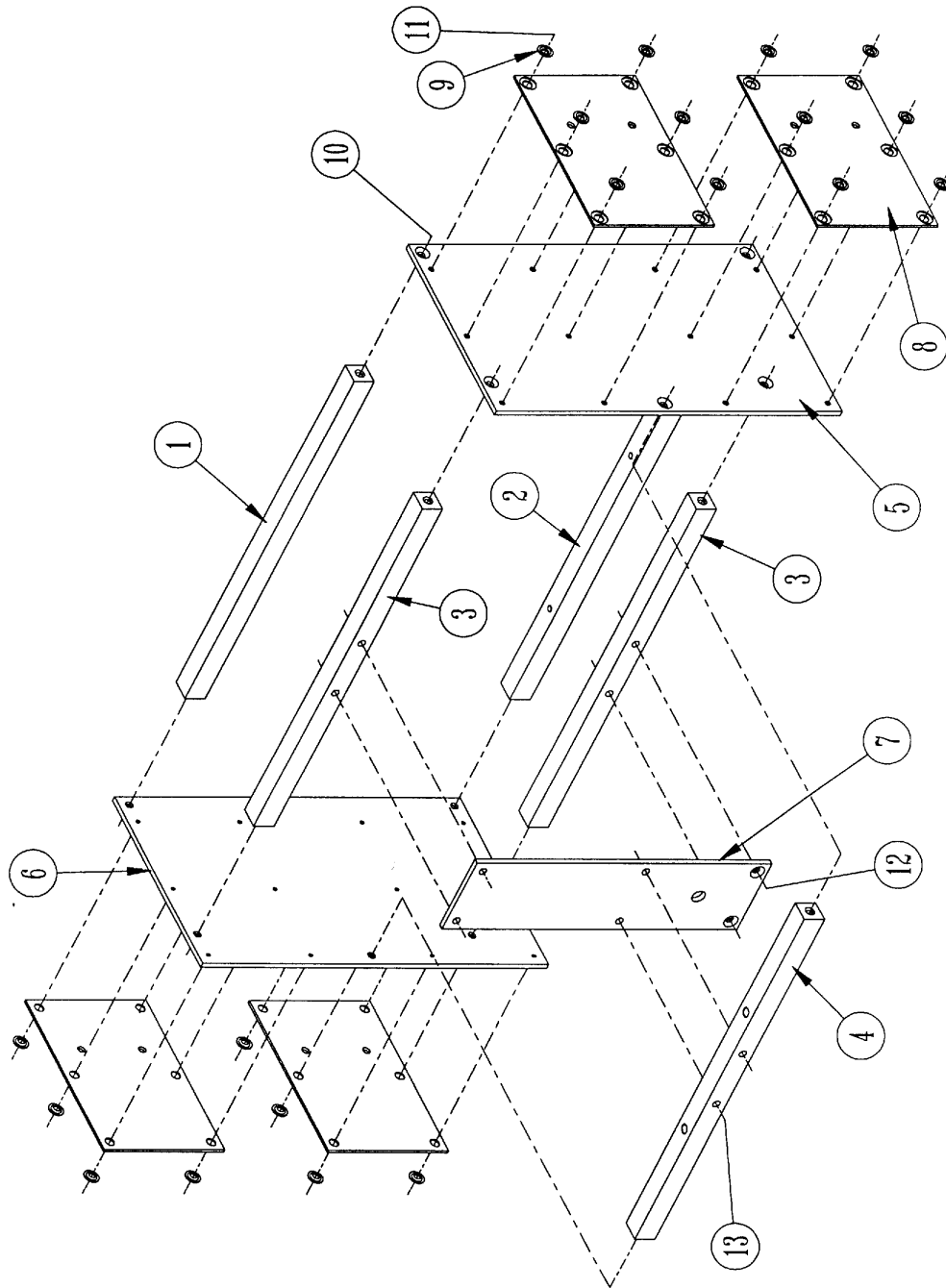


FEED POST SHAFT ASSEMBLY

Mandrel Assembly

Item	Qty	Part No.	Description
1	1	G7588	BAR, MANDREL SPACER
2	1	G7588A	BAR, MANDREL SPACER
3	2	G7589	BAR, MANDREL SPACER
4	1	G7590	BAR, MANDREL SPACER
5	1	G7592 R	PLATE, MANDREL SIDE
6	1	G7592 L	PLATE, MANDREL SIDE
7	1	G7591	PLATE, MANDREL MOUNTING
8	4	G3311A	SHEET, MANDREL TEFLON COVER
9	24	G3463	WASHER, TEFLON CLAMP
10	10	-	5/16 NC x 1 LONG, FLAT HEAD SOCKET SCREW
11	24	-	#10-24 x 3/8 LONG, FLAT HEAD SOCKET SCREW
12	2	-	5/16 NC x 1 3/4 LONG, FLAT HEAD SOCKET SCREW W/ LOCKWASHER AND NUT
13	4	-	5/16 NC x 1 3/4 LONG, HEX HEAD CAP SCREW W/ LOCKWASHER & NUT

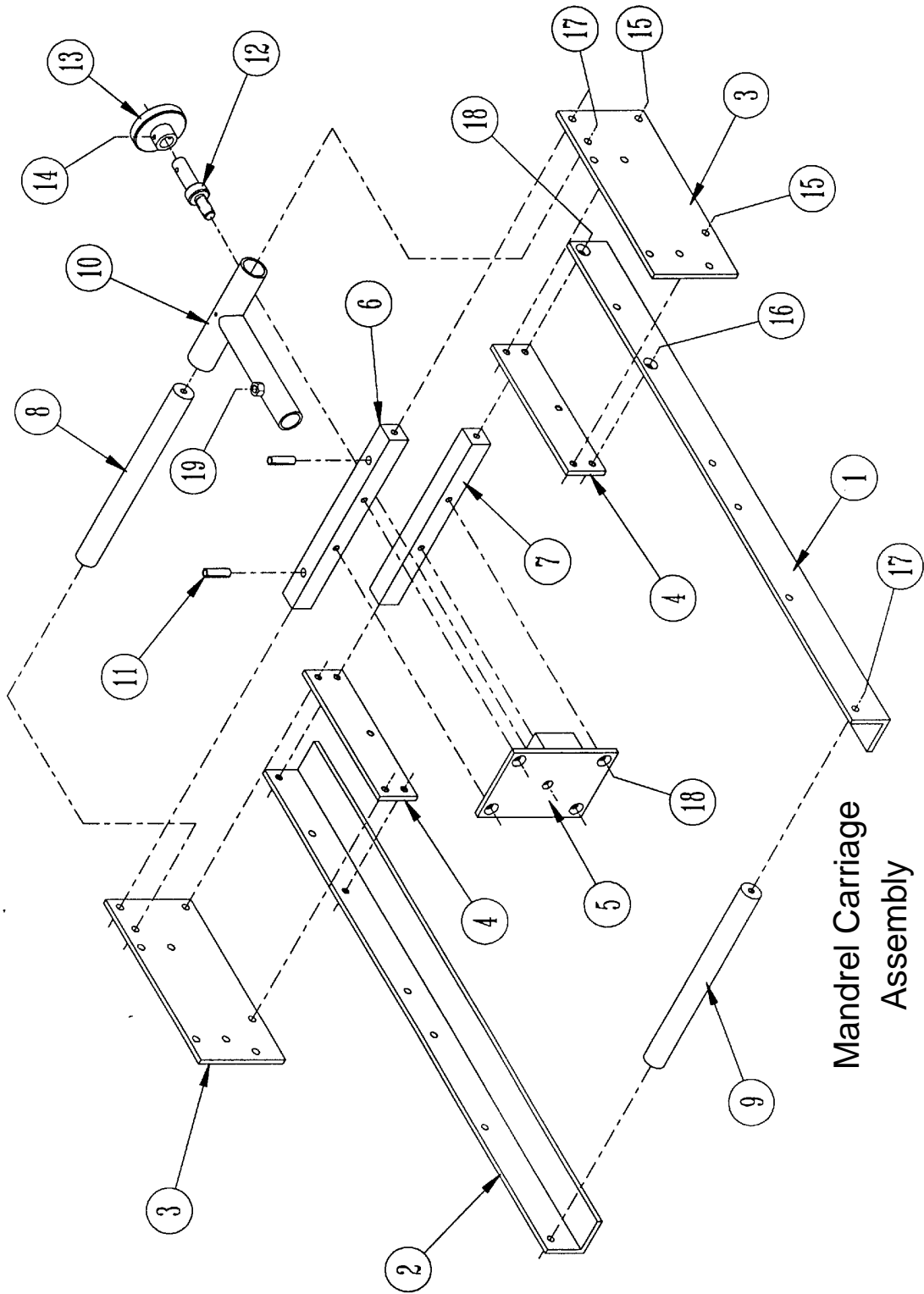
Mandrel Assembly



Mandrel Assembly

Mandrel Carriage Assembly

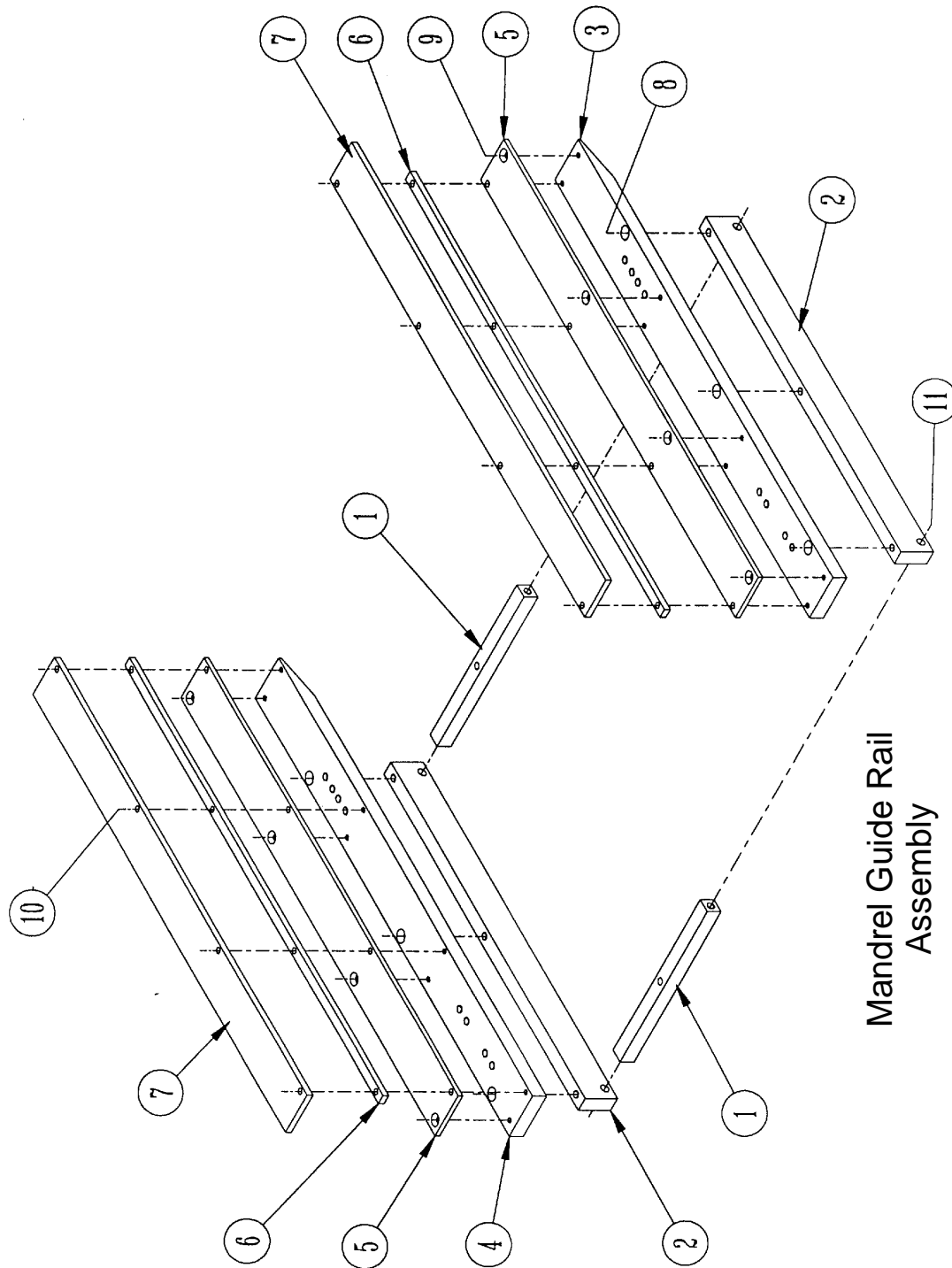
Item	Qty	Part No.	Description
1	1	G3046A R	RAIL, TRAY FORMING MANDREL
2	1	G3046A L	RAIL, TRAY FORMNG MANDREL
3	2	G7579	PLATE, MANDREL CARRIAGE SIDE
4	2	G3043	PLATE, MANDREL FRAME PLATE MOUNTING
5	1	G7580	PLATE, MANDREL MOUNTING
6	1	G7582	SPACER, MANDREL CARRIAGE TOP
7	1	G7584	SPACER, MANDREL CARRIAGE BOTTOM
8	1	G7667	SHAFT, CON ROD PIVOT
9	1	G7578	SPACER, MANDREL CARRIAGE
10	1	G3603	END, MANDREL CON ROD
11	2	GG6	Ø 3/8 X 1 1/4 LONG SPRING PIN
12	1	G4852A	STUD, MANDREL MOUNTING
13	1	G4852B	KNOB, MANDREL MOUNTING STUD
14	1	GG5G	Ø 3/16 X 1 LONG SPRING PIN
15	4	-	5/16 NC x 1 LONG, HEX HEAD CAP SCREW W/ LOCKWASHER AND NUT
16	2	-	5/16 NC x 1 LONG, FLAT HEAD SOCKET SCREW W/ LOCKWASHER AND NUT
17	6	-	5/16 NC x 1 LONG, HEX HEAD CAP SCREW W/LOCKWASHER
18	6	-	5/16 NC x 1 LONG, FLAT HEAD SOCKET SCREW
19	1	-	3/8 NC X 3/8 LONG, SOCKET CUP POINT SET SCREW



Mandrel Carriage
Assembly

Mandrel Guide Rail Assembly

Item	Qty	Part No.	Description
1	2	G7581	SPACER, MANDREL GUIDE SUPPORT BAR
2	2	G7586	BAR, MANDREL GUIDE SUPPORT
3	1	G7585 R	BASE, TRAY FORMER MANDREL
4	1	G7585 L	BASE, TRAY FORMER MANDREL
5	2	G3203	GIB, TRAY FORMER MANDREL BASE
6	2	G7682	SPACER, TRAY FORMER GUIDE CAP
7	2	G7681	CAP, TRAY FORMER MANDREL GUIDE
8	6	-	3/8 NC x 1 1/4 LONG, SOCKET HEAD SCREW
9	8	-	1/4 NC x 1/2 LONG, FLAT HEAD SOCKET SCREW
10	8	-	1/4 NC x 1 1/2 LONG, HEX HEAD CAP SCREW
11	4	-	3/8 NC x 1 1/2 LONG, HEX HEAD CAP SCREW W/ LOCKWASHER

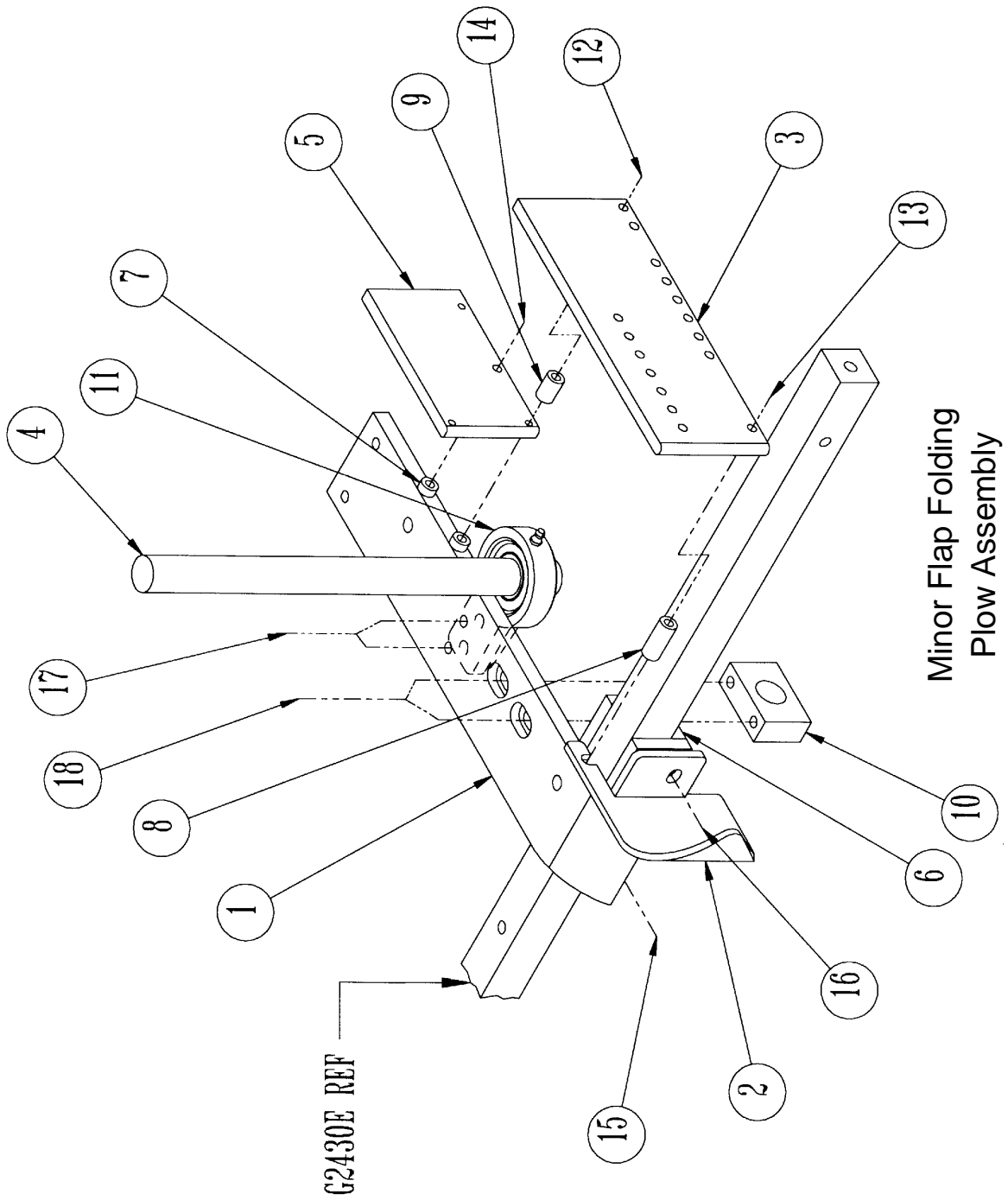


Mandrel Guide Rail Assembly

Minor Flap Folding Plow Assembly

Item	Qty	Part No.	Description
1	1	G2785H L	SHOE, TRAY FORMING
2	1	G2927B L	PLOW, INNER FLAP FORMING
3	1	G2933C	SHOE, TRAY OUTSIDE FLAP FORMING
4	1	G7604	ROD, TRAY FORM COMPRESSION
5	1	G3514A	PLATE, AUX. COMPRESSION
6	1	G3566	BAR, SHOE BOX FORMING CLAMP
7	2	GB53	SPACER, TRAY COMPRESSION PLATE 1/2 OD x 17/64 ID x 1/4 LONG
8	1	GB410	SPACER, TRAY FORMING SHOE PLOW 1/2 OD x 17/64 ID x 1 3/16 LONG
9	1	GB475	SPACER, OUTSIDE FLAP FORMING 1/2 OD x 17/64 ID x 3/4 LONG
10	1	G7617	BLOCK, COMPRESSION SHOE ADJUSTMENT
11	1	GE65A	BEARING, COMPRESSION ROD
12	1	-	1/4 NC x 2 1/4 LONG, SOCKET HEAD CAP SCREW
13	1	-	1/4 NC x 2 1/4 LONG, SOCKET HEAD CAP SCREW
14	1	-	1/4 NC x 1" LONG, SOCKET HEAD CAP SCREW / LOCKWASHER
15	1	-	5/16 NC x 1" LONG, HEX HEAD MACHINE SCREW / LOCKWASHER
16	1	-	5/16 NC x 1 1/4" LONG, HEX HEAD MACHINE SCREW / LCKWSHR
17	2	-	3/8 NC x 1" LONG, HEX HEAD MACHINE SCREW W/FLAT WASHER & LOCKWASHER
18	2	-	3/8 NC x 2 1/4 LONG, SOCKET HEAD CAP SCREW W/LOCKWASHER & NUT

Minor Flap Folding Plow Assembly

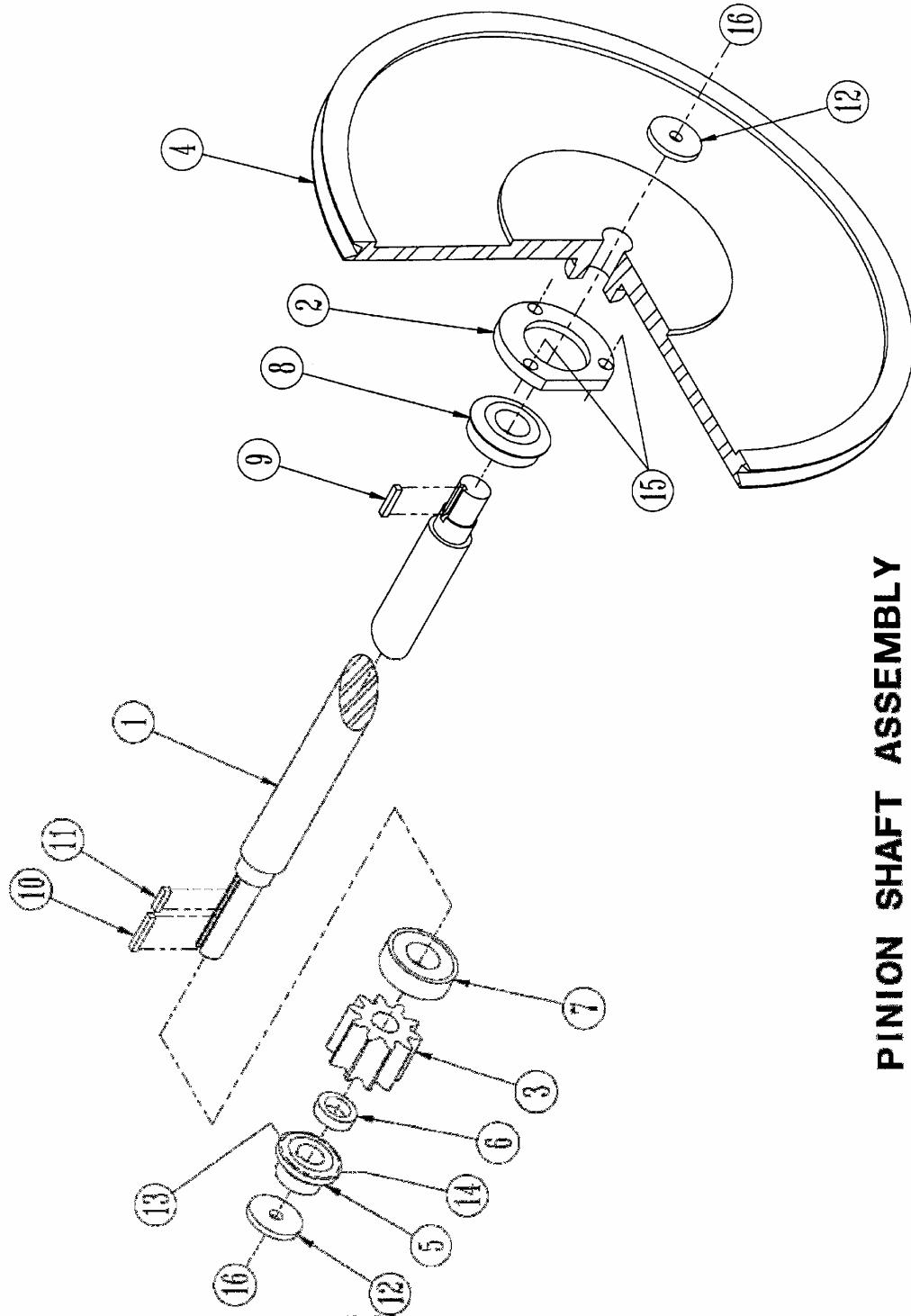


Pinion Shaft Assembly

Item	Qty	Part No.	Description
1	1	G2443C	SHAFT, TRANSMISSION PINION
2	1	G2444	RING, PINION SHAFT BEARING CLAMP
3	1	G2456	PINION, TRANSMISSION
*4	1	G3218	PULLEY, PINION SHAFT 12-35
	1	G3218A	PULLEY, PINION SHAFT 21-58
5	1	G7299	SPROCKET, BLANK FEED ROLL CHAIN (40B10)
6	1	GB379	SPACER, PINION SHAFT SPROCKET 1 1/8 OD x 3/4 ID x 5/16 LONG
7	1	GE13	BEARING, PINION SHAFT L.H.
8	1	GE13A	BEARING, PINION SHAFT R.H.
9	1	GJ6	KEY, PINION PULLEY 1/4 x 3/16 x 1 LONG
10	1	GJ9A	KEY, BLANK FEED ROLL DRIVE SPROCKET 3/16 x 3/16 x 3/4 LONG
11	1	GJ9D	KEY, TRANSMISSION PINION GEAR 3/16 x 3/16 x 1 1/4 LONG
12	2	GW12	WASHER, 1 1/2 OD x 3/8 ID x 3/16 THICK
13	1	-	1/4-20 NC x 1/4 LONG, SOCKET SET SCREW (CUP POINT)
14	1	-	1/4-20 NC x 3/16 LONG, SOCKET SET SCREW (CUP POINT)
15	3	-	1/4-20 NC x 1/2 LONG, SOCKET HEAD CAP SCREW
16	2	-	3/8-16 NC x 1 LONG, HEX HEAD CAP SCREW W/ LOCKWASHER

* Refer to machine order for part specification.

Pinion Shaft Assembly



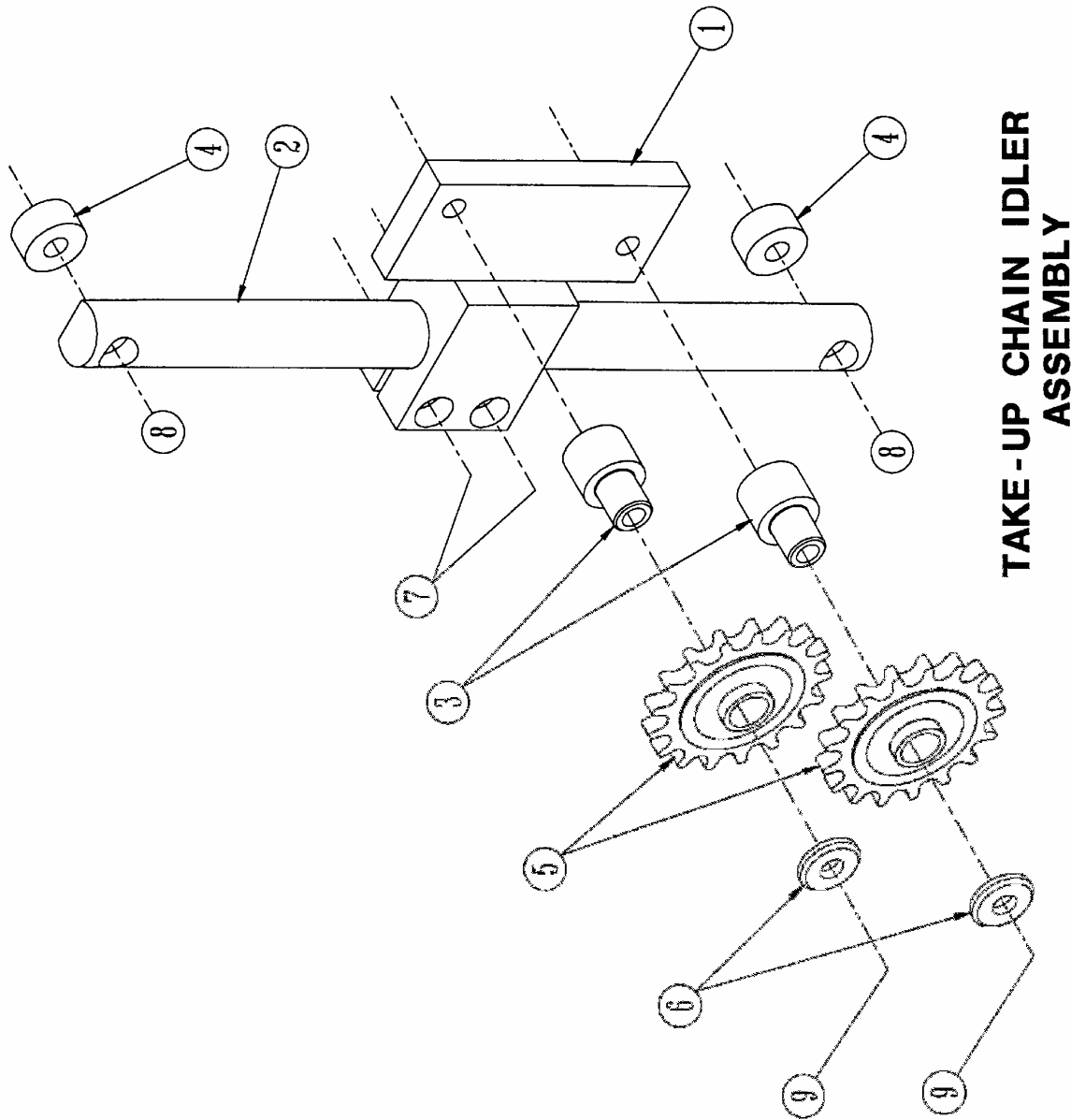
PINION SHAFT ASSEMBLY

Take-Up Chain Idler Assembly:

Item	Qty	Part No.	Description
1	1	G4934	MOUNT, IDLE SPROCKET TAKE-UP
2	1	G4935	BAR, IDLE SPROCKET TAKE-UP MOUNT
3	2	G7270	AXLE, IDLE SPROCKET
4	2	GB64	BUSHING, IDLE SPROCKET TAKE-UP BAR 1 OD x 25/64 ID x 1/2 LONG
5	2	GC9A	SPROCKET, IDLE TAKE-UP
6	2	GW1A	WASHER, 1 OD x 25/64 ID x 5/32 LONG
7	2	-	3/8-16 NC x 1 LONG, SOCKET HEAD CAP SCREW
8	2	-	3/8-16 NC x 1 1/4 LONG, SOCKET HEAD CAP SCREW
9	2	-	3/8-16 NC x 2 LONG HEX HEAD CAP SCREW

NOTE: These parts may be purchased as a preassembled package. To order, specify BU171A.

Take-Up Chain Idler Assembly

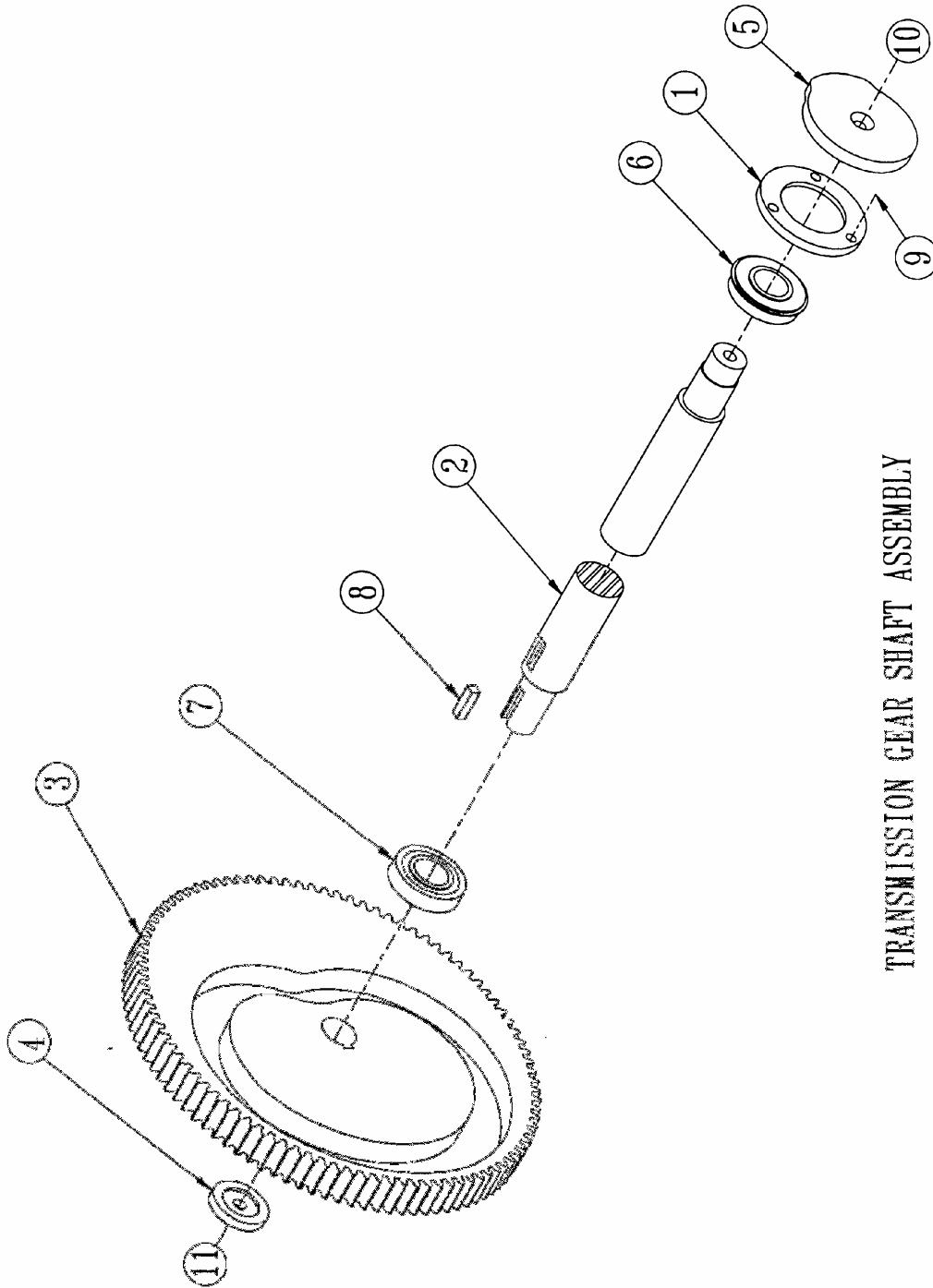


**TAKE-UP CHAIN IDLER
ASSEMBLY**

Transmission Gear Shaft Assembly:

Item	Qty	Part No.	Description
1	1	G2447	RING, MAIN SHAFT BEARING CLAMP
2	1	G2508C	SHAFT, TRANSMISSION GEAR (1T6)
3	1	G2619A	GEAR, TRANSMISSION MAIN
4	1	G3197	WASHER, MAIN DRIVE GEAR RETENTION
5	1	G3245A	CAM, CYCLE MICRO LIMIT SWITCH
6	1	GE2	BEARING, TRANSMISSION SHAFT R.H.
7	1	GE3	BEARING, TRANSMISSION SHAFT L.H.
8	1	GJ12A	KEY, TRANSMISSION MAIN GEAR 3/8 x 3/8 x 1 3/8 LONG
9	3	-	1/4-20 NC x 1/2 LONG, SOCKET HEAD CAP SCREW
10	1	-	1/2-13 NC x 1" LONG, FLAT HEAD SOCKET SCREW
11	1	-	1/2-13 NC x 1 1/4 LONG, x HEX HEAD CAP SCREW W/ LOCKWASHER

Transmission Gear Shaft Assembly

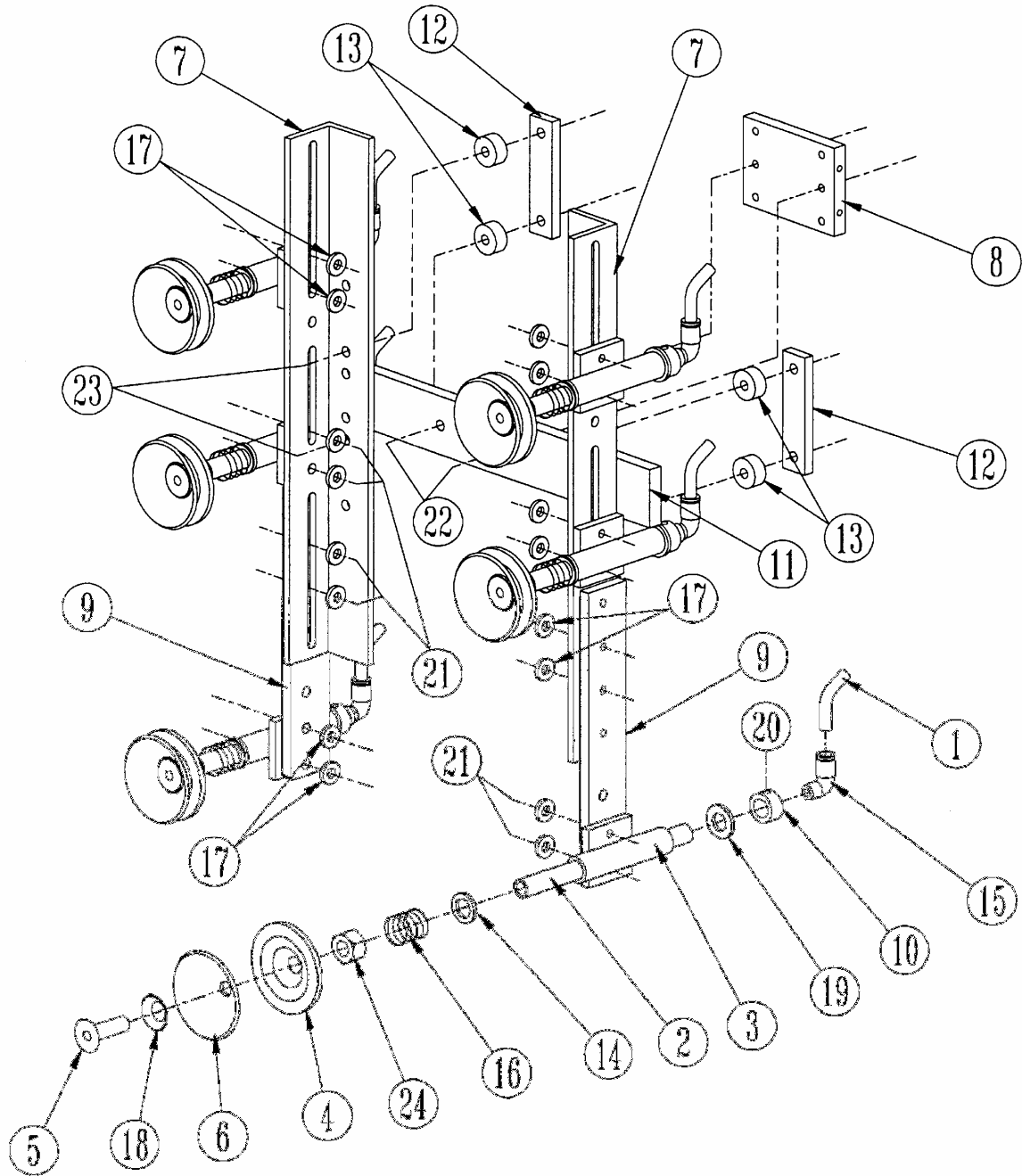


TRANSMISSION GEAR SHAFT ASSEMBLY

Vacuum Feed Cup Mounting Assembly

Item	Qty	Part No.	Description
1	*	G3737	TUBE, POLY FLOW VACUUM (CUT TO LENGTH)
2	6	G4432A	TUBE, SUCTION CUP MOUNTING
3	6	G4441A	BRACKET, VACUUM CUP TUBE SUPPORT
4	6	G4552	PLATE, VACUUM CUP BACK
5	6	G4553	BOLT, VACUUM CUP
6	6	G4554	PAD, VACUUM CUP
7	2	G4557	BRACKET, VACUUM CUP MOUNTING
8	1	G7813	PLATE, VACUUM CUP MOUNTING
9	2	G7905	BAR, VACUUM CUP BOTTOM PLACEMENT
10	6	G8244	SET COLLAR, VACUUM TUBE LOCATING
11	1	G8417	BAR, VACUUM CUP BRACKET MOUNTING
12	2	G8418	CLAMP, VACUUM CUP BRACKET MOUNTING
13	4	G8419	SPACER, VACUUM CUP BRACKET CLAMP 1 OD x 21/64 ID x 31/64 LONG
14	6	GB352	BUSHING, SPRING RETAINING 1 OD x 21/32 ID x 1/8 LONG
15	6	GP8C	1/4 PIPE TO 3/8 TUBE MALE ELBOW
16	6	GS180	SPRING, VACUUM CUP RETURN
17	16	GW56	WASHER, 3/4 OD x 21/64 ID x 1/8 LONG
18	6	GW84	WASHER, VACUUM CUP SPECIAL - DIMPLED 5/8 S.A.E.
19	6	GW89	WASHER, VACUUM CUP SHOCK ABSORBER 1 1/8 OD x 5/8 ID x 1/8 LONG
20	6	-	1/4 NC x 3/16 LONG, SOCKET SET SCREW
21	16	-	5/16 NC x 3/4 LONG, HEX HEAD CAP SCREW W/ LOCKWASHER
22	2	-	5/16 NC x 1 LONG, HEX HEAD CAP SCREW W/LOCKWASHER
23	4	-	5/16 NC x 1 3/4 LONG, HEX HEAD CAP SCREW W/ LOCKWASHER, FLAT WASHER & NUT
24	6	-	1/2 NC JAM NUTS

Vacuum Feed Cup Mounting Assembly



VACUUM CUP MOUNTING ASSEMBLY

Vacuum Feed Drive Mechanism Assembly:

Item	Qty	Part No.	Description
1	1	G2444	RING, BEARING CLAMP
2	1	G3362	GEAR, TRANSMISSION PINION
3	1	G7803	GEAR, VACUUM FEED DRIVE
4	1	G7805	AXLE, PINION DRIVE
5	1	G7806	SPROCKET, VACUUM FEED RATIO CHANGE (4:1)
	1	G7806A	SPROCKET, VACUUM FEED RATIO CHANGE (6:1)
	1	G7806B	SPROCKET, VACUUM FEED RATIO CHANGE (7.2:1 & 8.1)
6	1	G7807	PLATE, VACUUM FEED DRIVE MOUNTING
7	1	G7808	CON ROD, VACUUM FEED DRIVE
8	4	G7831	STUD, VACUUM FEED GUARD MOUNTING
9	1	G7832	GUARD, VACUUM FEED DRIVE MECHANISM
10	1	GB79	BUSHING, DRIVE GEAR CRANK SPACER 1 1/4 OD x 29/64 ID x 49/64 LONG
11	1	GE13A	BEARING, PINION GEAR (N.D.#488505)
12	2	GE51A	BEARING, BALL JOINT ROD END (7/16 ID)
13	1	GE70A	BEARING, 2" HOLE FLANGE (1 3/16 ID)
14	1	GE82	BEARING, DRIVE GEAR (N.D.#5505)
15	1	GJ9D	KEY, PINION GEAR
16	1	GJ10A	KEY, SPROCKET - 1/4 x 1/4 x 1 LONG
17	4	GW1	WASHER, VACUUM FEED DRIVE CON ROD 1 OD x 29/64 ID x 5/32 LONG
18	3	GW12	WASHER, DRIVE GEAR & SPROCKET 1 1/4 OD x 25/64 ID x 3/16 LONG
19	1	GHB1A	CONNECTING LINK
20		#40	ROLLER CHAIN
21	3	-	1/4 NC x 1/2 LONG, SOCKET HEAD SCREW
22	2	-	5/16 NC x 1/2 LONG, HEX HEAD CAP SCREW W/ LOCKWASHER
23	4	-	5/16 NC x 3/4 LONG, HEX HEAD CAP SCREW W/ LOCKWASHER
24	4	-	5/16 NC x 3/4 LONG, HEX HEAD CAP SCREW W/ LOCKWASHER & FLAT WASHER
25	2	-	3/8 NC x 2 1/4 LONG, CARRIAGE BOLT W /LOCKWASHER & NUT
26	1	-	3/8 NC x 3 1/2 LONG, CARRIAGE BOLT W/LOCKWASHER, NUT
27	1	-	7/16 NC x 1 3/4 LONG, HEX HEAD CAP SCREW W/ LOCKWASHER & NUT
28	1	-	7/16 NC x 2 LONG, HEX HEAD CAP SCREW W/LOCKWASHER

Vacuum Feed Frame Assembly

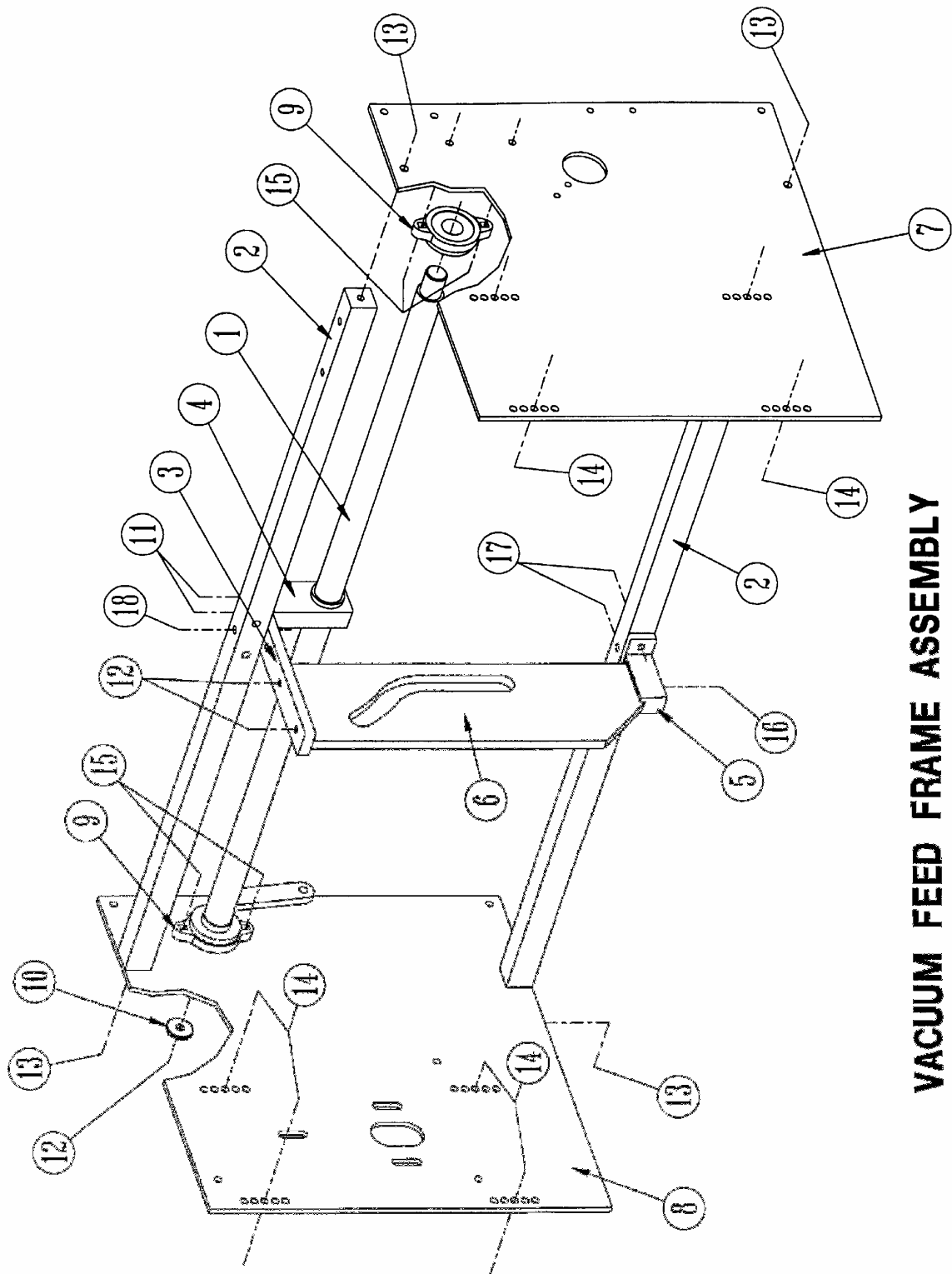
Item	Qty	Part No.	Description
1	1	G7809A	SHAFT, VACUUM CUP OPERATING (1T6 & 1D6A)
2	2	G7820B	BAR, VACUUM CUP CAM SUPPORT (1T6 & 1D6A)
3	1	G7825A	BRACKET, VACUUM FEED CAM TOP
4	1	G7825B	BEARING, VACUUM FEED OPERATING SHAFT CENTER
5	1	G7826	BRACKET, VACUUM CUP CAM BOTTOM SUPPORT
6	1	G7827	CAM, VACUUM CUP OPERATING PLATE
7	1	G7829A	PLATE, VACUUM FEED MOUNTING (RIGHT)
8	1	G7830A	PLATE, VACUUM FEED MOUNTING (LEFT)
9	2	GE70	BEARING, 2" HOLE FLANGE (1" ID)
10	1	GW12	WASHER, DRIVE GEAR & SPROCKET 1 1/4 OD x 25/64 ID x 3/16 LONG
11	2	-	5/16 NC x 1 1/4 LONG, HEX HEAD CAP SCREW W/ LOCKWASHER
12	3	-	3/8 NC x 1 LONG, HEX HEAD CAP SCREW W/LOCKWASHER
13	4	-	3/8 NC x 1 LONG, HEX HEAD CAP SCREW W/LOCKWASHER & FLAT WASHER
14	8	-	3/8 NC x 1 LONG, HEX HEAD CAP SCREW W/LOCKWASHER, FLAT WASHER & NUT
15	4	-	3/8 NC x 1 1/4 LONG, CARRIAGE BOLT W/LOCKWASHER, FLAT WASHER & NUT
16	1	-	3/8 NC x 1 1/2 LONG, HEX HEAD CAP SCREW W/ LOCKWASHER
17	2	-	3/8 NC x 1 3/4 LONG, HEX HEAD CAP SCREW W/ LOCKWASHER
18	1	-	3/8 NC x 2 LONG, HEX HEAD CAP SCREW W/LOCKWASHER

NOTE: ADDITIONAL ELECTRICAL COMPONENTS REQUIRED

(not shown)

Qty	Part No.	Description
1	GD28	SWITCH, OFF-ON
1	GD63	STARTER (VACUUM BLOWER)
3	40-0000-04	TERMINAL BLOCK

Vacuum Feed Frame Assembly

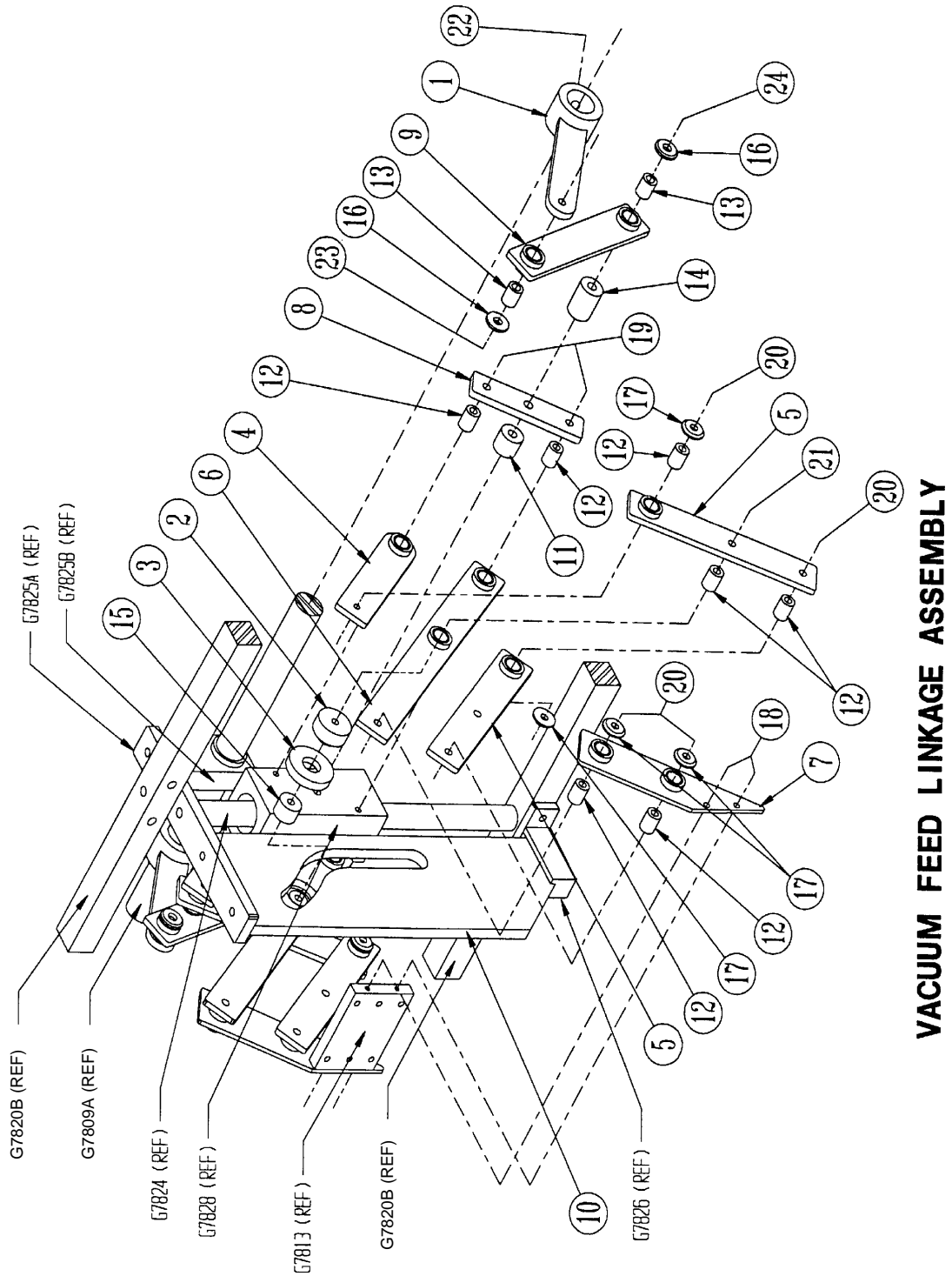


VACUUM FEED FRAME ASSEMBLY

Vacuum Feed Linkage Assembly

Item	Qty	Part No.	Description
1	2	G7810	LEVER, VACUUM CUP SLIDE OPERATING
2	2	G7811	SPACER, CAM FOLLOWER
3	2	G7812	PAD, CAM FOLLOWER SPACER WEAR
4	2	G7814	LINKAGE, VACUUM CUP MOUNTING PLATE
5	4	G7815	LEVER, VERTICAL ALIGNMENT
6	2	G7816	LEVER, VACUUM CUP MOUNTING PLATE CARRIER
7	2	G7817A	BRACKET, CUP MOUNTING PLATE
8	2	G7818	PLATE, MAIN LINKAGE MOUNTING
9	2	G7819A	LINK, VACUUM FEED CONNECTING
10	1	G7827	CAM, VACUUM CUP OPERATING PLATE
11	2	GB60	SPACER, LIFT CON ROD MOUNTING 1 OD x 25/64 ID x 13/16 LONG
12	14	GB361	BUSHING, VACUUM FEED LINKAGE 5/8 OD x 21/64 ID x 13/16 LONG
13	4	GB435	BUSHING, VACUUM FEED LINKAGE 5/8 OD x 3/8 ID x 49/64 LONG
14	2	GB514	SPACER, LIFT CON ROD MOUNTING 1 OD x 25/64 ID x 1 3/8 LONG
15	1	GE83	BEARING, CAM FOLLOWER (1 OD x 5/16 ID)
16	4	GW1A	WASHER, VACUUM FEED OPERATING SHAFT 1 OD x 25/64 ID x 5/32 LONG
17	8	GW1B	WASHER, VACUUM FEED LINKAGE 1 OD x 21/64 ID x 5/32 LONG
18	4	-	1/4 NC x 3/4 LONG, HEX HEAD CAP SCREW W/LOCKWASHER
19	4	-	5/16 NC x 1 1/2 LONG, HEX HEAD CAP SCREW W/ LOCKWASHER
20	8	-	5/16 NC x 1 3/4 LONG, HEX HEAD CAP SCREW W/ LOCKWASHER, FLAT WASHER & NUT
21	1	-	5/16 NC x 5 LONG, HEX HEAD CAP SCREW W/LOCKWASHER & NUT
22	2	-	3/8 NC x 1/2 LONG, SOCKET SET SCREW
23	2	-	3/8 NC x 1 3/4 LONG, HEX HEAD CAP SCREW W/ LOCKWASHER & NUT
24	2	-	3/8 NC x 3 3/4 LONG, HEX HEAD CAP SCREW W/ LOCKWASHER

Vacuum Feed Linkage Assembly



VACUUM FEED LINKAGE ASSEMBLY

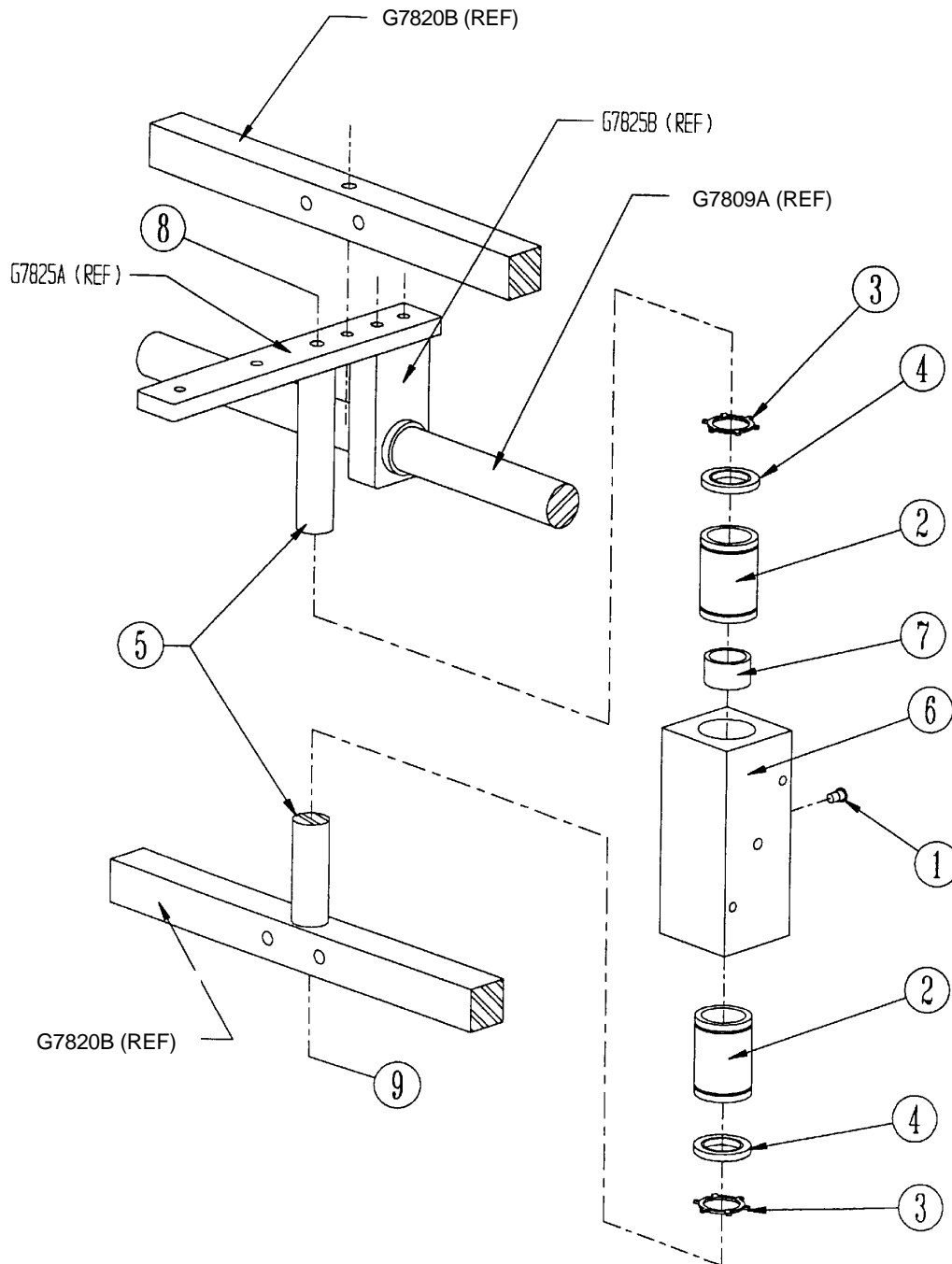
Vacuum Feed Manifold and Blower Assembly:

Item	Qty	Part No.	Description
1	*	G3737	TUBE, POLY FLOW VACUUM (CUT TO LENGTH)
2	1	G4423	VALVE, VACUUM RELIEF
3	1	G4436A	CAM, VACUUM VALVE OPERATING
4	1	G7006	HOSE, 1 1/2 ID VACUUM
5	1	G7009B	BLOWER, VACUUM (.62HP, 3PH, 50/60HZ, 200-230/460V)
	1	G7009C	BLOWER, VACUUM (.62HP, 3PH, 50/60HZ, 600V)
	1	G7009D	BLOWER, VACUUM (.62HP, 1PH, 50/60HZ, 220V)
	1	G7009E	BLOWER, VACUUM (1.0HP, 3PH, 50/60HZ, 200-230/460V)
6	2	G7012	CLAMP,HOSE
7	1	G7553	MANIFOLD, VACUUM PUMP VALVE
8	1	G7554	AXLE, VACUUM VALVE ARM PIVOT
9	1	G7555	PAD, VACUUM VALVE COVER
10	1	G7556	DEFLECTOR, BLOWER EXHAUST
11	1	G7557	ARM, VACUUM VALVE OPERATING
12	1	G7802	FITTING, VACUUM HOSE
13	1	G7833	BASE, VACUUM BLOWER MOUNTING (.62HP)
	1	G7833A	BASE, VACUUM BLOWER MOUNTING (1.0HP)
14	2	G8358	ELBOW, 90 DEG. STREET
15	1	GE50	BEARING, CAM FOLLOWER (1 1/8 OD x 5/16 ID)
16	6	GP7C	1/4 PIPE TO 3/8 TUBE MALE CONNECTOR
17	1	GW1B	WASHER, VACUUM FEED LINKAGE 1 OD x 21/64 ID x 5/32 LONG
18	4	GW63	WASHER, VACUUM VALVE COVER PAD 3/4 OD x 17/64 ID x 1/8 LONG
19	2	-	1/4 NC x 3/4 LONG, HEX HEAD CAP SCREW W/LOCKWASHER
20	2	-	1/4 NC x 1 LONG, HEX HEAD CAP SCREW W/LOCKWASHER & FLAT WASHER
21	1	-	5/16 NC x 1 1/4 LONG, HEX HEAD CAP SCREW W/ LOCKWASHER
22	4	-	5/16 NC x 1 1/4 LONG, HEX HEAD CAP SCREW W/ LOCKWASHER & NUT
23	2	-	5/16 NC x 2 LONG, FLAT HEAD SOCKET SCREW W/ LOCKWASHER & NUT
24	1	-	5/16 NC x 3 LONG, HEX HEAD CAP SCREW W/LOCKWASHER, FLAT WASHER & NUT
25	1	-	3/8 NC x 1/2 LONG, SOCKET SET SCREW

Vacuum Feed Slide Bearing Assembly

Item	Qty	Part No.	Description
1	1	G170	COVER, OIL HOLE
2	2	G7821	BEARING, LINEAR BALL SLIDE
3	2	G7822	RETAINING RING, LINEAR BALL BUSHING
4	2	G7823	SEAL, LINEAR BALL BUSHING
5	1	G7824	SHAFT, VACUUM FEED SLIDE BLOCK
6	1	G7828	BLOCK, SLIDE BEARING
7	1	GB326	SPACER, LINEAR BEARING, 1 1/4 OD x 1 ID x 3/4 LONG
8	1	-	3/8 NC x 1 1/4 LONG, HEX HEAD CAP SCREW W/ LOCKWASHER
9	1	-	3/8 NC x 2 LONG, HEX HEAD CAP SCREW W/LOCKWASHER

Vacuum Feed Slide Bearing Assembly

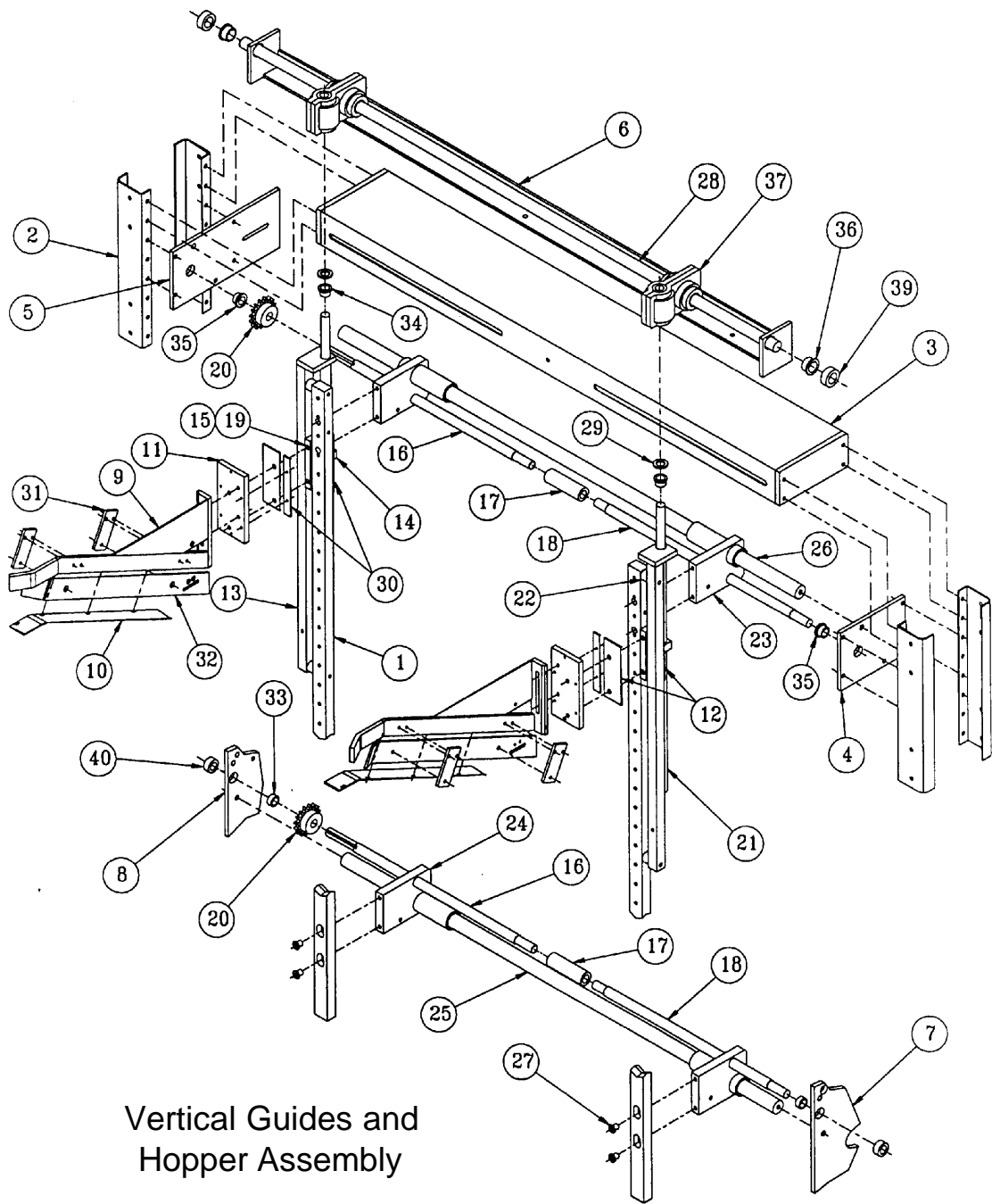


VACUUM FEED SLIDE BEARING ASSEMBLY

Vertical Guides and Hopper Assembly

Item	Qty	Part No.	Description
1	2	00-07613-00	TREE, ADJUSTING
2	2L/2R	00-03022-00	EXTENSION, BLANK FEED SYSTEM FRAME
3	1	00-02775-02	PRE FAB BLANK FEED FRAME SPREADER
4	1	00-07605-00	PLATE, TREE ADJUSTING SCREW, RH
5	1	00-07614-00	PLATE, TREE ADJUSTING SCREW, LH
6	1	00-08069-00	BRACKET, BLANK ADJ SHAFT MOUNTING
7	1	REF	FRAME PANEL, RH
8	1	REF	FRAME PANEL, LH
9	1L/1R	00-02929-02	BAR, TRAY BLANK BLADE SUPPORT
10	1L/1R	00-02937-15	BLADE, TRAY BLANK SUPPORT
11	2	00-08315-00	PLATE, BLISS HOPPER BLISS MOUNTING
12	2	00-07642-01	PLATE, BLANK HOPPER BLOCK SIDE ADJ.
13	1L/1R	00-08065-00	BAR, BLANK HOPPER GUIDE
14	1L/1R	00-08072-00	BLOCK, HOPPER ADJUST BLANK
15	AR	00-08073-00	SHIM, HOPPER
16	2	00-07608-00	SCREW, LEFT SIDE TREE ADJUST
17	2	00-07668-00	COUPLING, ADJUSTING SCREW
18	2	00-07607-00	SCREW, RIGHT SIDE TREE ADJUST
19	2	00-08062-00	BLOCK, BLANK GUIDE SPACER
20	2	00-07669-00	SPROCKET, ADJ. AND COMPRESSION
21	2	00-08070-00	SCREW, BLANK HOPPER ADJUST
22	4	00-08060-00	SPACER, BLANK GUIDE BAR MOUNTING
23	1L/1R	00-07610-00	BRACKET, TREE SUPPORT
24	1L/1R	00-07611-00	BRACKET, TREE SUPPORT
25	1	00-07672-00	SHAFT, TREE SUPPORT, LOWER
26	1	00-07673-00	SHAFT, TREE SUPPORT, UPPER
27	4	00-07603-00	SPACER, LOWER TREE MOUNTING
28	1	00-08063-01	SHAFT, BLANK ADJUSTING
29	2	00-08061-00	WASHER, BLANK HOPPER ADJ. SCREW
30	2	00-07642-00	STRIP, WEAR
31	2	00-08420-00	BRACKET, HOPPER SIDE GUIDE
32	2	00-08421-00	GUIDE, TRAY HOPPER, SIDE
33	2	GB413	BUSHING
34	2	GB437	BUSHING
35	2	GB511	BUSHING
36	2	GB512	BUSHING
37	2	00-08059-00	FLOAT-A-SHAFT (TOL-O-MATIC)
39	2	GA11	SET COLLAR, Ø 1"
40	1	GA8	SET COLLAR, Ø 5/8"

Vertical Guides and Hopper Assembly



Vertical Guides and Hopper Assembly

Master Parts List

Qty	Stock No.	Part No.	Description
4	00-00008-01	G8A	WHEEL
4	00-00009-01	G9A	AXLE, WHEEL
2	00-00967-05	G967E	BALL, ADHESIVE APPLICATOR CHECK
2	00-01562-02R	G1562BR	KNIFE, MATT SUPPORT
2	00-01562-02L	G1562BL	KNIFE, MATT SUPPORT
4	00-02430-05	G2430E	BAR, FRAME SPREADER
1	00-02443-03	G2443C	SHAFT, TRANSMISSION PINION
3	00-02444-00	G2444	RING, BEARING CLAMP
1	00-02447-00	G2447	RING, MAIN SHAFT BEARING CLAMP
1	00-02456-00	G2456	PINION, TRANSMISSION (ENLARGED)
1	00-02508-03	G2508C	SHAFT, TRANSMISSION GEAR
1	00-02619-01	G2619A	GEAR, TRANSMISSION MAIN
1	00-02706-03	G2706D	GUARD, FORM MANDREL
2	00-02743-00	G2743	SCREEN, ADHESIVE MELT
1	00-02746-05	G2746E	SUPPORT, MATT HOPPER LOADING
1	00-02754-03	G2754C	COVER, MATT FEED SYSTEM (R.H.)
2	00-02758-00	G2758	KNOB, MELT POT COVER
1	00-02772-01R	G2772AR	FRAME ASSM. MATT FEED SYSTEM
1	00-02772-01L	G2772AL	FRAME ASSM. MATT FEED SYSTEM
1	00-02775-02	G2775B	SPREADER, MATT FEED FRAME
1	00-02781-01R	G2781AR	SHROUD, ADHESIVE MELT POT
1	00-02781-01L	G2781AL	SHROUD, ADHESIVE MELT POT
2	00-02782-00	G2782	COVER, ADHESIVE MELT POT
2	00-02785-08R	G2785HR	SHOE, TRAY FORMING
2	00-02785-08L	G2785HL	SHOE, TRAY FORMING
1	00-02791-07	G2791G	BOX, ELECTRICAL CONTROL
4	00-02833-00	G2833	PLATE, GUARD MOUNT
4	00-02853-00	G2853	HINGE, ADHESIVE MELT POT COVER
2	00-02873-02	G2873B	BOX, ADHESIVE MELT THERMOSTAT
2	00-02874-02	G2874B	COVER, ADHESIVE MELT THERMOSTAT
4	00-02879-01	G2879A	PAWL, TRAY STRIPPER
1	00-02880-00	G2880	COVER, TRANSMISSION PLATE (R.H.)
1	00-02880-03	G2880C	COVER, TRANSMISSION PLATE (L.H.)
1	00-02906-02	G2906B	WHEEL, FEED
1	00-02908-00	G2908	ROLLER, MATT FEED IDLE
1	00-02911-01	G2911A	SHAFT, MATT FEED IDLE ROLLER
2	00-02918-00	G2918	GIB, TRAY MATT SUPPORT BAR
2	00-02927-02R	G2927BR	PLOW, INNER FLAP FORMING
2	00-02927-02L	G2927BL	PLOW, INNER FLAP FORMING
1	00-02929-02R	G2929BR	BAR, TRAY MATT BLADE SUPPORT
1	00-02929-02L	G2929BL	BAR, TRAY MATT BLADE SUPPORT
4	00-02933-03	G2933C	SHOE, TRAY FORMING SLIDE
2	00-02936-01	G2936A	GUARD, THERMOSTAT WIRE
1	00-02937-12R	G2937LR	BLADE, TRAY BLANK HOPPER SUPPORT

Qty	Stock No.	Part No.	Description
1	00-02937-12L	G2937LL	BLADE, TRAY BLANK HOPPER SUPPORT
2	00-02997-11	G2997D	HEATER, ADHESIVE MELT
2	00-02998-02	G2998B	THERMOSTAT
1	00-02999-05	G2999E	BAR, MATT FEED IDLE ROLLER MOUNT
4	00-03018-00	G3018	LATCH, COVER
4	00-03021-00	G3021	PLATE, MATT FEED EXTENSION
4	00-03022-00	G3022	EXTENSION, MATT FEED FRAME
A.R.	00-03028-02	G3028	SEGMENT, ADHESIVE PROGRAM
2	00-03033-00	G3033	COVER, MATT FEED EXTENSION
2	00-03043-00	G3043	PLATE, TRAY PLUNGER FRAME MOUNTING
1	00-03064-01R	G3064AR	BAR, MELT POT CLAMP
1	00-03064-01L	G3064AL	BAR, MELT POT CLAMP
2	00-03067-00	G3067	STUD, MELT POT COVER KNOB
1	00-03089-01R	G3089AR	POT, ADHESIVE MELT
1	00-03089-01L	G3089AL	POT, ADHESIVE MELT
4	00-03092-00	G3092	SPREADER, THERMOSTAT CONTROL BOX
1	00-03143-02R	G3143BR	HOUSING, ADHESIVE APPLICATOR PUMP
1	00-03143-02L	G3143BL	HOUSING, ADHESIVE APPLICATOR PUMP
1	00-03144-00R	G3144R	PLATE, ADHESIVE APPLICATOR HOUSING
1	00-03144-00L	G3144L	PLATE, ADHESIVE APPLICATOR HOUSING
2	00-03145-02	G3145B	GEAR, ADHESIVE PUMP DRIVE
2	00-03146-01	G3146A	GEAR, ADHESIVE PUMP IDLE
2	00-03147-00	G3147	WHEEL, ADHESIVE PUMP DRIVE
4	00-03148-00	G3148	JET, ADHESIVE APPLICATOR PUMP
2	00-03149-02	G3149B	PLUG, ADHESIVE APPLICATOR CHECK VALVE SPRING
2	00-03151-01	G3151A	SPACER, ADHESIVE APPLICATOR HOUSING
2	00-03153-00	G3153	NEEDLE VALVE, ADHESIVE APPLICATOR VOLUME CONTROL
6	00-03184-00	G3184	STOP, MATT RETAINER
1	00-03197-00	G3197	WASHER, MAIN GEAR RETENTION
A.R.	00-03198-00R	G3198R	DEFLECTOR, MATT
A.R.	00-03198-00L	G3198L	DEFLECTOR, MATT
2	00-03203-00	G3203	GIB, TRAY FORM MANDREL BASE
1	00-03218-00	G3218	PULLEY, PINION SHAFT (12-35 SPEED T.P.M.)
	00-03218-01	G3218A	PULLEY, PINION SHAFT (21-58 SPEED T.P.M.)
1	00-03230-00	G3230	BELT, DRIVE
1	00-03231-00	G3231	PULLEY, VARI DRIVE MOTOR
1	00-03232-00	G3232	ARM, MOTOR DRIVE SPEED CONTROL
1	00-03233-00	G3233	WASHER, MOTOR DRIVE BASE
1	00-03234-00	G3234	KNOB, SPEED CONTROL
1	00-03235-00	G3235	ROD, SPPED CONTROL OPERATING
1	00-03236-00	G3236	BASE, MOTOR DRIVE
1	00-03237-02	G3237B	SOLENOID, MAGNETIC BRAKE RELEASE (115V)
1	00-03238-00	G3238	BRACKET, BRAKE SOLENOID MOUNT
1	00-03239-00	G3239	LEVER, BRAKE OPERATING
1	00-03240-00	G3240	SCREW, BRAKE LEVER PIVOT
2	00-03241-00	G3241	WASHER, BRAKE PRESSURE SPRING
1	00-03242-00	G3242	BRAKE SHOE AND LINING

Qty	Stock No.	Part No.	Description
2	00-03243-00	G3243	STUD , BRAKE SHOE RETAINING
1	00-03244-00	G3244	BOX, BRAKE SOLENOID COVER
1	00-03244-01	G3244A	PLATE, BRAKE SOLENOID COVER MOUNTING
1	00-03245-01	G3245A	CAM, MICRO SWITCH OPERATING
1	00-03362-00	G3362	GEAR, TRANSMISSION PINION (VAC. FEED)
4	00-03377-01	G3377A	AXLE, IDLE SPROCKET
1	00-03402-00	G3402	HANDLE, CRANK
2	00-03443-14	G3443N	SPACER, ADHESIVE APPLICATOR HOUSING (2 1/2")
1	00-03464-00R	G3464R	GUIDE, MATT
1	00-03464-00L	G3464L	GUIDE, MATT
2	00-03465-01	G3465A	STOP, TRAY BOTTOM
2	00-03508-02	G3508B	HANDLE, ADHESIVE MELT SCREEN
2	00-03509-00	G3509	MOUNT, TRANSFORMER
4	00-03514-01	G3514A	PLATE, TRAY COMPRESSION EXTENSION
1	00-03536-03	G3536A	GUARD, VACUUM FEED
8	00-03537-00	G3537	BRACKET, GUARD MOUNTING
1	00-03540-00	G3540	MOUNT, ELECTRICAL BOX
1	00-03541-00	G3541	MOUNT, ELECTRICAL BOX
4	00-03566-00	G3566	BAR, FORM SHOE CLAMP
1	00-03603-00	G3603	END, MANDREL CON ROD
4	00-03665-00	G3665	SCREW, ADHESIVE APPLICATOR JET HOLE PLUG
A.R.	00-03737-00	G3737	TUBE, POLY FLOW VACUUM (CUT TO LENGTH)
1	00-04423-00	G4423	VALVE, VACUUM RELIEF
4	00-04432-01	G4432A	TUBE, SUCTION CUP MOUNTING
1	00-04436-01	G4436A	CAM, VACUUM VALVE OPERATING
4	00-04441-01	G4441A	BRACKET, VACUUM CUP TUBE SUPPORT
4	00-04552-00	G4552	PLATE, VACUUM CUP BACK
4	00-04553-00	G4553	BOLT, VACUUM CUP
4	00-04554-00	G4554	PAD, VACUUM CUP
2	00-04557-00	G4557	BRACKET, VACUUM CUP MOUNTING
1	00-04722-01	G4722A	GUIDE, MATT
1	00-04852-00	G4852	KNOB, MANDREL MOUNTING
1	00-04861-01	G4861	SHAFT, FEED POST
1	00-04934-00	G4934	MOUNT, IDLE SPROCKET TAKE-UP
1	00-04935-00	G4935	BAR, IDLE SPROCKET TAKE-UP MOUNT
1	00-07006-00	G7006	HOSE, 1 1/2" I.D. VACUUM
1	00-07009-02	G7009B	BLOWER, VACUUM
2	00-07012-00	G7012	CLAMP, HOSE
2	00-07115-00	G7115	SPROCKET
2	00-07270-00	G7270	AXLE, IDLE SPROCKET
1	00-07299-00	G7299	SPROCKET, MATT FEED ROLL SHAFT (PINION SHAFT)
1	00-07553-00	G7553	MANIFOLD, VACUUM PUMP VALVE
1	00-07554-00	G7554	AXLE, VACUUM VALVE ARM PIVOT
1	00-07555-00	G7555	PAD, VACUUM VALVE COVER
1	00-07556-00	G7556	DEFLECTOR, BLOWER EXHAUST
1	00-07557-00	G7557	ARM, VACUUM VALVE OPERATING
1	00-07562-00	G7562	ASSEMBLY, LOWER FRAME
1	00-07563-00	G7563	SPROCKET, BOTTOM STOP ADJUSTING

Qty	Stock No.	Part No.	Description
1	00-07564-00	G7564	SPROCKET, BOTTOM STOP DRIVE
2	00-07566-00	G7566	PLATE, BOTTOM STOP RETAINER
4	00-07567-00	G7567	BAR, BOTTOM STOP MOUNTING
1	00-07568-00R	G7568R	STOP, BOTTOM
1	00-07568-00L	G7568L	STOP, BOTTOM
1	00-07569-00	G7569	BRACKET, BOTTOM STOP ADJ. SCREW (R.H.)
1	00-07569-01	G7569A	BRACKET, BOTTOM STOP ADJ. SCREW (L.H.)
2	00-07570-00	G7570	BRACKET, BOTTOM STOP ADJ. SCREW (UPPER)
2	00-07571-00	G7571	SCREW, BOTTOM STOP ADJUSTING
1	00-07572-00	G7572	BAR, BOTTOM STOP SUPPORT
4	00-07574-00	G7574	WASHER, INSULATING
4	00-07575-00	G7575	BUSHING, POT INSULATING
1	00-07576-01R	G7576AR	BRACKET, ADHESIVE SYSTEM MOUNTING
1	00-07576-01L	G7576AL	BRACKET, ADHESIVE SYSTEM MOUNTING
1	00-07578-00	G7578	SPACER, MANDREL CARRIAGE
2	00-07579-00	G7579	PLATE, MANDREL CARRIAGE
1	00-07580-00	G7580	PLATE, MANDREL MOUNTING
2	00-07581-00	G7581	SPACER, MANDREL GUIDE SUPPORT BAR
1	00-07582-00	G7582	SPACER, MANDREL CARRIAGE TOP
1	00-07583-00	G7583	ROD, MANDREL CONNECTING
1	00-07584-00	G7584	SPACER, MANDREL CARRIAGE
1	00-07585-00R	G7585R	BASE, TRAY FORMER MANDREL
1	00-07585-00L	G7585L	BASE, TRAY FORMER MANDREL
2	00-07586-00	G7586	BAR, MANDREL GUIDE SUPPORT
1	00-07587-00	G7587	POST, FEED
4	00-07603-00	G7603	SPACER, LOWER TREE MOUNTING
2	00-07604-00	G7604	ROD, TRAY FOR MING COMPRESSION
1	00-07605-00	G7605	PLATE, TREE ADJUSTING SCREW (R.H.)
3	00-07607-00	G7607	SCREW, TREE ADJUSTING TOP RIGHT
2	00-07608-00	G7608	SCREW, TREE ADJUSTING TOP & BOTTOM LEFT
1	00-07610-00R	G7610R	BRACKET, TREE SUPPORT
1	00-07610-00L	G7610L	BRACKET, TREE SUPPORT
1	00-07611-00R	G7611R	BRACKET, TREE SUPPORT
1	00-07611-00L	G7611L	BRACKET, TREE SUPPORT
2	00-07612-00	G7612	SPROCKET, TREE & COMPRESSION ADJ. DRIVE
1	00-07613-00R	G7613R	TREE, ADJUSTING
1	00-07613-00L	G7613L	TREE, ADJUSTING
1	00-07614-00	G7614	PLATE, TREE ADJUSTING SCREW (L.H.)
2	00-07615-00	G7615	CAP, TOP COMPRESSION SUPPORT
4	00-07616-00	G7616	SPACER, TOP COMPRESSION SHOE SUPPORT
2	00-07617-00	G7617	BLOCK, COMPRESSION SHOE ADJUSTMENT
2	00-07618-00	G7618	BLOCK, COMPRESSION SHOE ADJUSTMENT
1	00-07619-00	G7619	SHAFT, SIDE COMPRESSION ADJUSTING
1	00-07620-00	G7620	BEARING, SIDE COMPRESSION CRANK
2	00-07621-00	G7621	GEAR, TOP COMPRESSION ADJUSTING
1	00-07622-00	G7622	BAR, TOP COMPRESSION SUPPORT (REAR)
1	00-07623-00	G7623	SHAFT, TOP COMPRESSION ADJUSTING
1	00-07624-00R	G7624R	SCREW, TOP COMPRESSION ADJUSTING

Qty	Stock No.	Part No.	Description
1	00-07624-00L	G7624L	SCREW, TOP COMPRESSION ADJUSTING
1	00-07625-00	G7625	SCREW, BOTTOM LEFT COMPRESSION ADJUSTING
1	00-07626-00	G7626	SCREW, TOP LEFT COMPRESSION ADJUSTING
1	00-07628-00	G7628	SCREW, TOP RIGHT COMPRESSION ADJUSTING
1	00-07629-00R	G7629R	PLATE, TOP COMPRESSION SUPPORT
1	00-07629-00L	G7629L	PLATE, TOP COMPRESSION SUPPORT
2	00-07630-00	G7630	BAR, TOP COMPRESSION PLATE GUIDE
2	00-07638-00	G7638	MOUNT, MATT FEED IDLE ROLL
10	00-07642-00	G7642	STRIP, WEAR
2	00-07643-01	G7643A	SPACER, PROGRAM WHEEL BRACKET
6	00-07644-00	G7644	BRACKET, GUIDE BAR MOUNTING
2	00-07645-00	G7645	KEY, PROGRAM WHEEL
4	00-07649-00	G7649	BAR, GIB HOLDER
1	00-07650-00R	G7650R	BRACKET, PROGRAM WHEEL ADJUSTING
1	00-07650-00L	G7650L	BRACKET, PROGRAM WHEEL ADJUSTING
1	00-07655-00	G7655	SHAFT, MATT FEED ROLL
1	00-07662-00R	G7662R	PLATE, FEED WHEEL MOUNTING
1	00-07662-00L	G7662L	PLATE, FEED WHEEL MOUNTING
2	00-07664-00	G7664	DISC, INTERMITTENT ADHESIVE APPLICATOR PROGRAM
1	00-07667-00	G7667	SHAFT, CON ROD PIVOT
4	00-07668-00	G7668	COUPLING, ADJUSTING SCREW
3	00-07669-00	G7669	SPROCKET, TREE & COMPRESSION ADJUSTING
1	00-07670-00	G7670	BAR, TOP COMPRESSION SUPPORT (FRONT)
1	00-07672-00	G7672	SHAFT, TREE ADJUSTING (LOWER)
1	00-07673-00	G7673	SHAFT, TREE ADJUSTING (UPPER)
1	00-07674-00	G7674	COVER, MATT FEED SYSTEM FRAME
2	00-07675-00	G7675	FLOAT-A-SHAFT
2	00-07676-00	G7676	WASHER, THRUST
2	00-07681-00	G7681	CAP, TRAY FORMER MANDREL GUIDE
2	00-07682-00	G7682	SPACER, TRAY FORMER GUIDE CAP
1	00-07802-00	G7802	FITTING, VACUUM HOSE
1	00-07803-00	G7803	GEAR, VACUUM FEED DRIVE
1	00-07804-00	G7804	SPROCKET, VACUUM FEED DRIVE (4:1 & 6:1)
1	00-07805-00	G7805	AXLE, PINION DRIVE
1	00-07806-00	G7806	SPROCKET, VACUUM FEED RATIO CHANGE 4:1
	00-07806-01	G7806A	SPROCKET, VACUUM FEED RATIO CHANGE 6:1
1	00-07807-00	G7807	PLATE, VACUUM FEED DRIVE MOUNTING
1	00-07808-01	G7808A	CON ROD, VACUUM FEED DRIVE
1	00-07809-01	G7809A	SHAFT, VACUUM CUP OPERATING
2	00-07810-00	G7810	LEVER, VACUUM CUP SLIDE OPERATING
2	00-07811-00	G7811	SPACER, CAM FOLLOWER
2	00-07812-00	G7812	PAD, CAM FOLLOWER SPACER WEAR
1	00-07813-00	G7813	PLATE, VACUUM CUP MOUNTING
2	00-07814-00	G7814	LINKAGE, VACUUM CUP MOUNTING PLATE
4	00-07815-00	G7815	LEVER, VERTICAL ALIGNMENT
2	00-07816-00	G7816	LEVER, VACUUM CUP MOUNTING PLATE CARRIER
2	00-07817-00	G7817	BRACKET, CUP MOUNTING PLATE

Qty	Stock No.	Part No.	Description
2	00-07818-00	G7818	PLATE, MAIN LINKAGE MOUNTING
2	00-07819-00	G7819	ROD, VACUUM FEED CONNECTING
1	00-07820-00	G7820	BAR, VACUUM CUP CAM SUPPORT
1	00-07820-03	G7820C	BAR, UPPER BLOWER & CAM MOUNTING
2	00-07821-00	G7821	BEARING, LINEAR BALL SLIDE
2	00-07822-00	G7822	RETAINING RING, LINEAR BALL BUSHING
2	00-07823-00	G7823	SEAL, LINEAR BALL BUSHING
1	00-07824-00	G7824	SHAFT, VACUUM FEED SLIDE BLOCK
1	00-07825-01	G7825A	BRACKET, VACUUM FEED CAM TOP
1	00-07825-02	G7825B	BEARING, VACUUM FEED OPERATING SHAFT CENTER
1	00-07826-00	G7826	BRACKET, VACUUM CUP CAM BOTTOM SUPPORT
1	00-07827-00	G7827	CAM, VACUUM CUP OPERATING PLATE
1	00-07828-00	G7828	BLOCK, SLIDE BEARING
1	00-07829-01	G7829A	PLATE, VACUUM FEED MOUNTING (RIGHT)
1	00-07830-01	G7830A	PLATE, VACUUM FEED MOUNTING (LEFT)
3	00-07831-00	G7831	STUD, VACUUM FEED GUARD MOUNTING
1	00-07831-01	G7831A	STUD, VACUUM FEED GUARD MOUNTING
1	00-07832-00	G7832	GUARD, VACUUM FEED DRIVE MECH.
1	00-07833-00	G7833	BASE, VACUUM BLOWER MOUNTING
1	00-07834-00	G7834	SUPPORT, FORM MANDREL SAFETY GUARD
1	00-07835-00R	G7835R	RAIL, TRAY FORM PLUNGER
1	00-07835-00L	G7835L	RAIL, TRAY FORM PLUNGER
1	00-07848-00	G7848	ROD, MATT DEFLECTOR MOUNTING
1	00-07849-00	G7849	DEFLECTOR, MATT TOP
2	00-07905-00	G7905	BAR, VACUUM CUP BOTOM PLACEMENT
2	00-07906-00	G7906	PLATE, HOPPER BOTTOM STOP
1	00-07907-00	G7907	BAR, HOPPER BOTTOM STOP PLATE
1	00-08043-00	G8043	BAR, TRANSFORMER MOUNTING BRACKET TIE
1	00-08058-00R	G8058R	BAR, TRAY MATT BLADE SUPPORT
1	00-08058-00L	G8058L	BAR, TRAY MATT BLADE SUPPORT
2	00-08059-00	G8059	FLOAT-A-SHAFT
4	00-08060-00	G8060	SPACER, MATT GUIDE BAR MOUNTING
2	00-08061-00	G8061	WASHER, MATT HOPPER ADJUSTING SCREW
2	00-08062-00	G8062	BLOCK, MATT GUIDE SPACER
1	00-08063-00	G8063	SHAFT, RIGHT-HAND MATT ADJUSTING
1	00-08064-00	G8064	SHAFT, LEFT-HAND MATT ADJUSTING
1	00-08065-00R	G8065R	BAR, MATT HOPPER GUIDE
1	00-08065-00L	G8065L	BAR, MATT HOPPER GUIDE
1	00-08066-00	G8066	COUPLING, MATT ADJUSTING SHAFT
1	00-08067-00	G8067	BEARING, MATT HOPPER CRANK
1	00-08068-00	G8068	SPROCKET, MATT ADJUSTING SHAFT
1	00-08069-00	G8069	BRACKET, MATT ADJUSTING SHAFT MOUNTING
2	00-08070-00	G8070	SCREW, MATT HOPPER ADJUSTING
1	00-08071-00	G8071	SPROCKET, MATT ADJUSTING CRANK
1	00-08072-00R	G8072R	BLOCK, MATT HOPPER ADJUSTING
1	00-08072-00L	G8072L	BLOCK, MATT HOPPER ADJUSTING
6	00-08073-00	G8073	SHIM, HOPPER
1	00-08074-00	G8074	PLATE, HOPPER LODING RAMP MOUNTING

Qty	Stock No.	Part No.	Description
2	00-08243-00	G8243	HUB, PROGRAM WHEEL MOUNTING
4	00-08244-00	G8244	SET COLLAR, VACUUM TUBE LOCATING
1	00-08246-00R	G8246R	MOUNT, ADHESIVE SYSTEM MOUNTING BRACKET
1	00-08246-00L	G8246L	MOUNT, ADHESIVE SYSTEM MOUNTING BRACKET
2	00-08422-00	G8422	SPACER, TOP COMPRESSION SUPPORT BEARING
2	00-08423-00	G8423	BRACKET, TOP COMPRESSION SUPPORT BEARING
1	01-00005-00	GA5	SET COLLAR, SPEED CONTROL KNOB
4	01-00008-00	GA8	SET COLLAR, VAC FEED & ADJUSTING SPROCKETS
14	01-00009-00	GA9	SET COLLAR, SPEED CONTROL KNOB & SET SHAFTS
3	01-00011-00	GA11	SET COLLAR, COMP. ADJ. SHAFT & HOPPER ADJ. SCREW
4	02-00020-00	GB20	SPACER, ADHESIVE MELT POT ROLLERS
8	02-00053-00	GB53	SPACER, TOP SHOE MOUNTING
2	02-00060-00	GB60	SPACER, LIFT CON ROD MOUNTING
8	02-00061-00	GB61	SPACER, FORMING SHOE CLAMPING
2	02-00064-00	GB64	SPACER, TAKE-UP SPROCKET MOUNTING
1	02-00079-00	GB79	SPACER, DRIVE GEAR CRANK
1	02-00145-00	GB145	BUSHING, SPEED CONTROL ARM SPACER
1	02-00198-00	GB198	SPACER, MOTOR PULLEY
4	02-00262-00	GB262	BUSHING, ADHESIVE POT MTG. BRACKET ROLLER
1	02-00267-00	GB267	SPACER, SPEED CONTROL OPERATING ROD
1	02-00271-00	GB271	BUSHING, SPEED CONTROL OPERATING ROD
4	02-00311-00	GB311	BUSHING, COVER MOUNTING
1	02-00326-00	GB326	SPACER, LINEAR BEARING
14	02-00361-00	GB361	BUSHING, VACUUM FEED LINKAGE
1	02-00379-00	GB379	SPACER, MATT FEED ROLL SHAFT DRIVE SPROCKET
2	02-00398-00	GB398	BUSHING, FORM PLUNGER CONNECTING YOKE
4	02-00410-00	GB410	SPACER, SHOE MOUNTING
8	02-00413-00	GB413	BUSHING, SCREW ADJUSTING
2	02-00437-00	GB437	BUSHING, HOPPER ADJUSTING SHAFT
8	02-00475-00	GB475	SPACER, TRAY COMPRESSION PLATE
4	02-00499-00	GB499	SPACER, TRAY COMPRESSION PLATE
12	02-00511-00	GB511	BUSHING, ADJUSTING SCREW SHAFT
6	02-00512-00	GB512	BUSHING, TOP COMPRESSION & HOPPER ADJ. SHAFT
2	02-00514-00	GB514	SPACER, LIFT CON ROD MOUNTING
2	03-00009-01	GC9A	SPROCKET, IDLER (#40 CHAIN)
5	03-00009-02	GC9B	SPROCKET, IDLER (#41 CHAIN)
1	04-00007-07	GD7G	OPEN-TYPE MOTOR STARTER
1	04-00007-08	GD7H	MAGNETIC MOTOR STARTER
1	04-00014-02	GD14B	EMERGENCY STOP BUTTON
1	04-00021-00	GD21	MICRO SWITCH, FEED POST CAM
1	04-00023-00	GD23	DISCONNECT SWITCH
1	04-00027-01	GD27A	PUSH BUTTON START SWITCH
2	04-00028-01	GD28A	SELECTOR SWITCH
1	04-00030-00	GD30	SELECTOR SWITCH
2	04-00044-00	GD44	RELAY A/S 700N A1 120V
1	05-00002-00	GE2	BEARING, TRANSMISSION SHAFT (R.H.)
1	05-00003-00	GE3	BEARING, TRANSMISSION SHAFT (L.H.)

Qty	Stock No.	Part No.	Description
2	05-00013-00	GE13	BEARING, FEED POST & PINION SHAFT (L.H.)
3	05-00013-01	GE13A	BEARING, FEED POST & PINION SHAFT (R.H.)
2	05-00038-00	GE38	BEARING, MATT FEED IDLE ROLL
1	05-00043-03	GE43B	BEARING, CAM FOLLOWER ROLLER
1	05-00050-00	GE50	BEARING, CAM FOLLOWER ROLLER 1 1/8" O.D. X 5/16" I.D.
2	05-00051-01	GE51A	BEARING, BALL JOINT ROD END 7/16" I.D.
2	05-00064-00	GE64	CAM FOLLOWER, BEARING
4	05-00065-01	GE65A	BEARING, COMPRESSION SHAFT
2	05-00070-00	GE70	BEARING, 2 HOLE FLANGE 1" I.D.
3	05-00070-01	GE70A	BEARING, 2 HOLE FLANGE 1 3/16" I.D.
1	05-00082-00	GE82	BEARING, DRIVE GEAR
1	05-00083-00	GE83	BEARING, CAM FOLLOWER 1" O.D. X 5/16" I.D.
2	07-00005-02	GG5B	ROLL PIN, TOP COMPRESSION GEAR
20	07-00005-03	GG5C	PIN, 3/16" X 5/16" BRASS
1	07-00005-07	GG7G	ROLL PIN, SOLENOID PLUNGER
3	07-00005-12	GG5L	ROLL PIN, ADJUSTING SHAFT
1	10-00006-00	GJ6	KEY, PINION PULLEY
1	10-00009-01	GJ9A	KEY, MATT FEED ROLL DRIVE SPROCKET
3	10-00009-04	GJ9D	KEY
2	10-00010-01	GJ10A	KEY, SPROCKET
1	10-00012-01	GJ12A	KEY, TRANSMISSION MAIN GEAR
1	13-00004-04	GM4D	MOTOR, ELECTRIC DRIVE
1	19-00017-00	GS17	SPRING, BRAKE RELEASE
4	19-00086-00	GS86	SPRING, COVER MOUNTING
4	19-00108-00	GS108	SPRING, TRAY STRIPPER PAWL
8	19-00143-00	GS143	SPRING, PUSHER ARM MOUNT PAD
2	19-00152-00	GS152	SPRING, ADHESIVE APPLICATOR CHECK VALVE
4	19-00180-00	GS180	SPRING, VACUUM CUP RETURN
2	22-00006-02	GV6B	LIGHT, HEATER INDICATING
1	22-00013-00	GV13	2 POLE FUSE BLOCK (OLD STYLE)
1	22-00013-02	GV13B	3 POLE FUSE BLOCK (OLD STYLE)
6	22-00013-05	GV13C	FUSE HOLDER
1	22-00014-00	GV14	PUSH BUTTON ENCLOSURE
1	22-00016-06	GV16F	TRANSFORMER 5KVA
2	22-00017-00	GV17	RESET BUTTON
4	23-00001-00	GW1	WASHER, VACUUM FEED DRIVE CON ROD
7	23-00001-01	GW1A	WASHER, VACUUM FEED OPERATING SHAFT
15	23-00001-02	GW1B	WASHER, VACUUM FEED LINKAGE
6	23-00012-00	GW12	WASHER, SPROCKET & GEAR RETAINING
5	23-00056-00	GW56	WASHER, ADHESIVE MELT POT ROLLER
2	23-00063-00	GW63	WASHER, VACUUM VALVE COVER PAD
8	23-00065-00	GW65	WASHER, ADJUSTING SCREW SHAFT
2	23-00072-00	GW72	WASHER, PINION SHAFT
4	23-00084-00	GW84	WASHER, VACUUM CUP SPC. DIMPLET 5/8" SAE
4	23-00089-00	GW89	WASHER, VACUUM CUP SHOCK ABSORBER

This page intentionally left blank.