

# DP 320 DROP PACKER

*Continuous Packing of Glass, Plastic, Fiber or Metal Containers*

- Packs Up To 25 Cycles Per Minute
- Plastic Belting for Smooth Transfers
- Rough Top Case Feed Belt
- Low-Pressure Pneumatic Case Platform
- Down Product Detector
- Allen Bradley Micrologix PLC



A DOVER COMPANY

# DP 300 DROP PACKER

## Standard Features:

- Cross Feed Case Conveyor (Model 300)
- Fully Programmable Logic Controller
- Guarding Package
- Auto Jam Shut Down Sensor
- Size Changeover Assist Components
- NEMA 12 Electrical Controls
- White Acrylic Enamel Paint

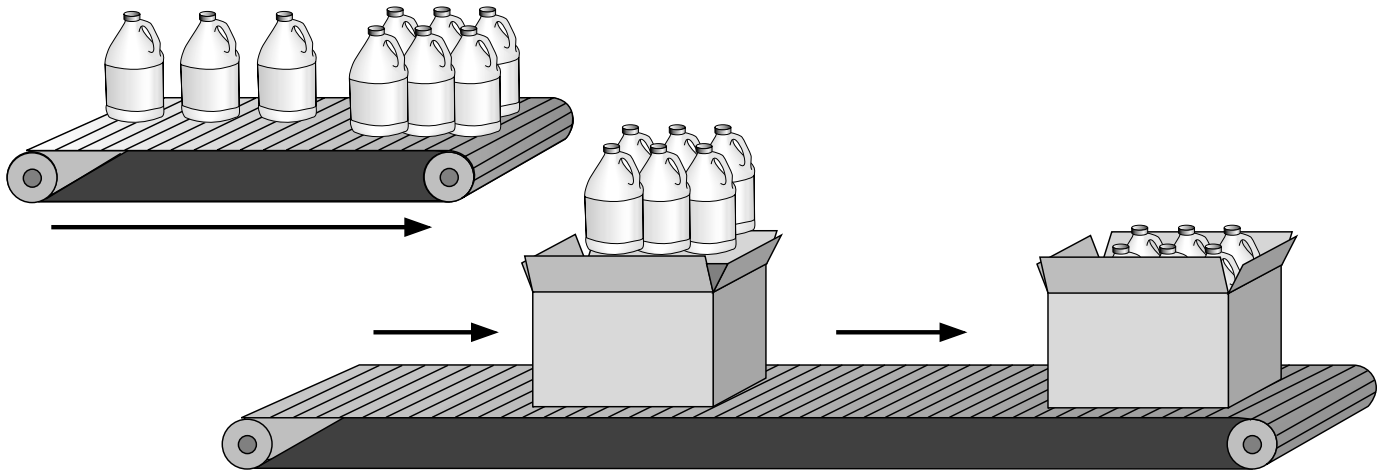
## Available Options:

- Line Divider
- Additional Grids
- Other Voltages
- Steel-It Epoxy Paint
- Casters
- Upgraded PLC
- NEMA 4 Electrical Controls
- Downstream Photo Eye for Auto Start/Stop
- Three Color Stack Light
- Extra E-Stop Station
- Diverter
- Agitator
- Stainless Steel Construction

## DROP PACKING/OPERATING SEQUENCE

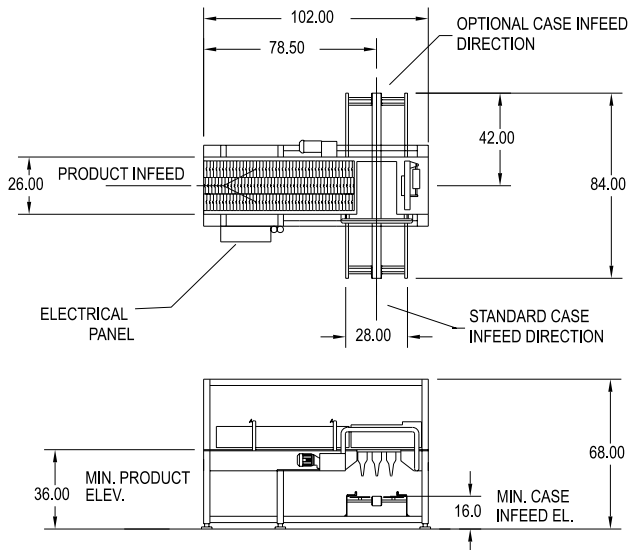
Model 300 Case Sizes: 12" to 22" long (305 mm to 560mm), 8.5" to 14" wide (215 to 350mm), 5" to 12" depth (127 to 305mm)

Model 320 Case Sizes: 12" to 20" long (305 mm to 508mm), 8.5" to 14" wide (215 to 350mm), 5" to 12" depth (127 to 305mm)

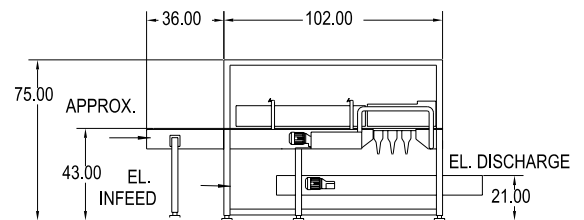
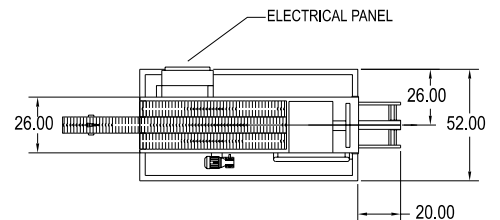


## MACHINERY SPECIFICATIONS

Specifications: **Electrical: 230V, 3-Phase, 60 Hz**  
**Air Required: .5 CFM @ 80 PSI**



DP 300 (Right-hand model shown)



DP 320 (Left-hand model shown)



1050 Miller Drive • Altamonte Springs, Florida 32701  
 Phone: (407) 260-0330 • Fax: (407) 260-7096 • Toll Free USA: (800) 214-1565  
 E-mail: sales@swfsoutheast.com • Web Site: www.swfcompanies.com

