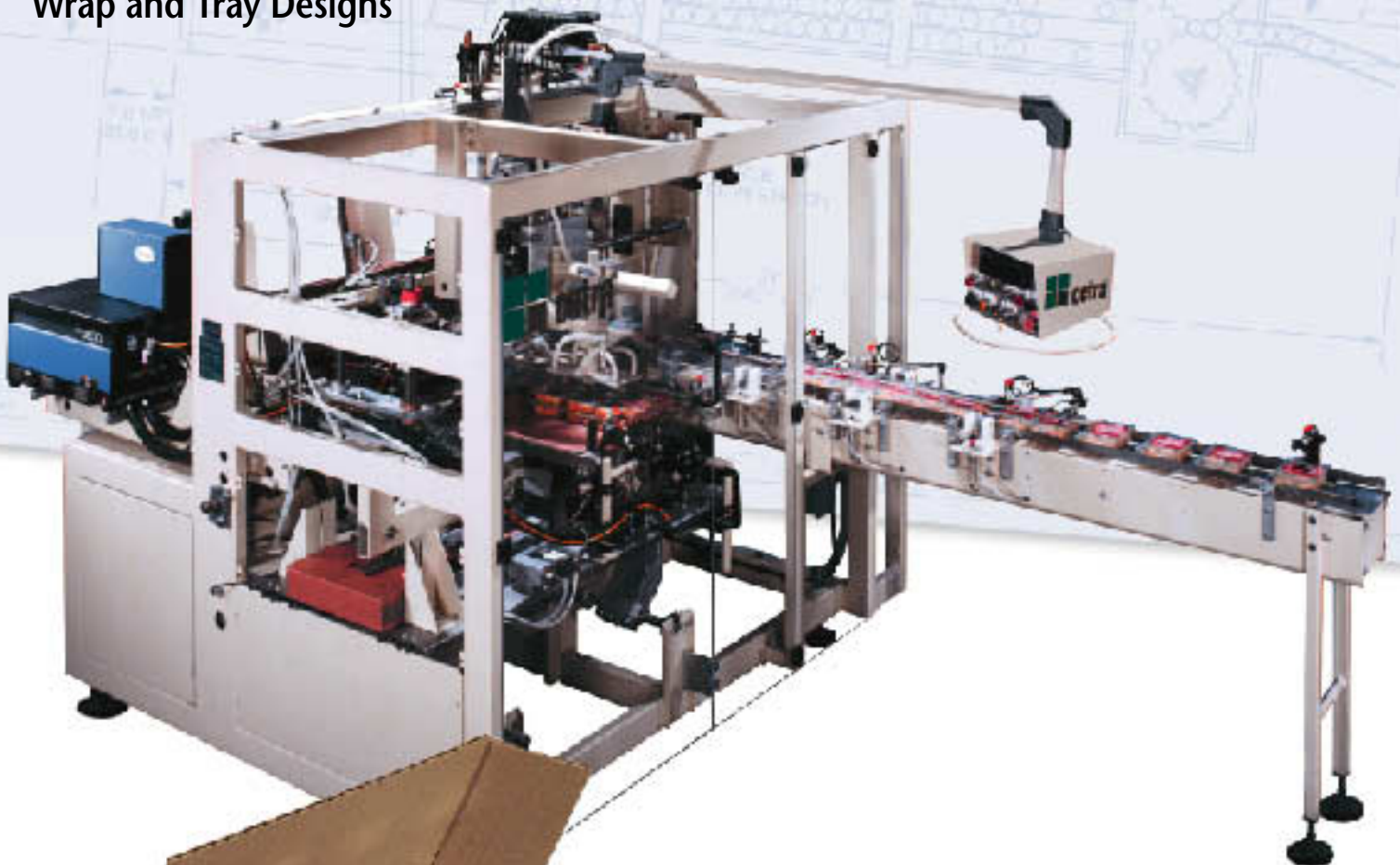


WP 100 CETRA WRAPAROUND CASING SYSTEM

Accumulates, Sorts, Packs and Wraps

- Up to 30 Cases Per Minute
- Heavy-Duty Construction
- Accommodates Various Wrap and Tray Designs
- Small Footprint
- Modular Design
- Mechanical Drive
- Handles Cans, Cartons, Bottles Plastic Trays, Cylindrical Containers and Non-Round Containers



WP 100 CETRA WRAPAROUND CASING SYSTEM

Formerly the Cetra Wraparound Case Packer

Standard Features:

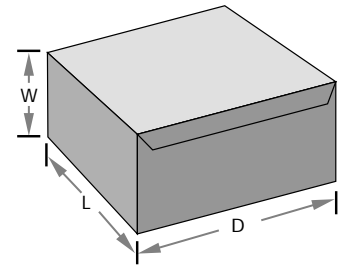
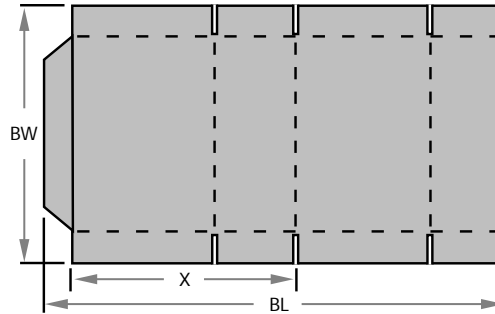
- Continuous, Mechanical Motion Main Drive (moves product through handling system to loading device)
- Quick Changeovers
- Multiple Infeed Configurations
- Built -In Safety (interlocked safety doors)
- Allen Bradley Programmable Controller

Available Options:

- Multi-Layering Capability
- LED Diagnostic Display
- Central Lubrication System
- Various Infeed Lane Dividers
- Rotating Swing Arm Pendant Control Panel
- Various Loading Heads

CASE SPECIFICATIONS

Dimensions:		
	MIN.	MAX.
BW	10" (25.4cm)	28" (71.1cm)
BL	15" (38.1cm)	47.5" (120.7cm)
X	1.4" (3.6cm)	25.6" (65cm)
W	2.75" (7cm)	11" (28cm)
D	7" (17.8cm)	16.5" (42cm)
L	4" (10.1cm)	12" (30.5cm)



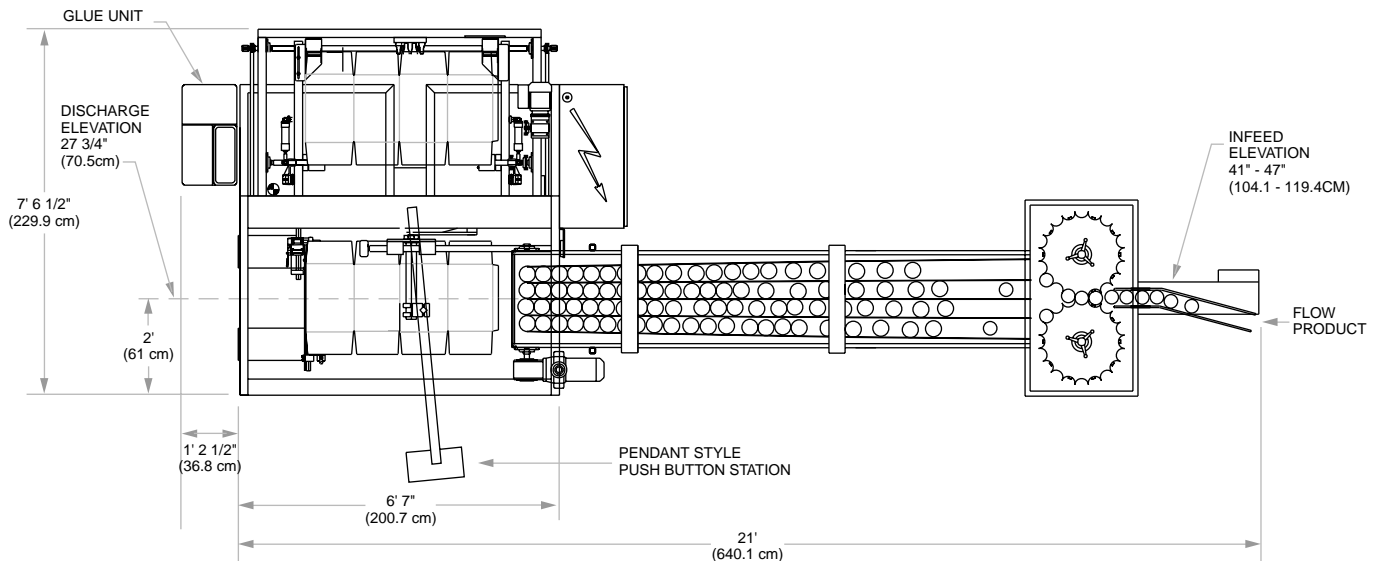
Note: Specifications subject to change without notice.

MACHINERY SPECIFICATIONS

Many Layouts Available:

Electrical: 240 volt, 3 phase, 60 hertz @ 30 amps

Air: 10 CFM at 80 PSI



1050 Miller Drive • Altamonte Springs, Florida 32701
 Phone: (407) 260-0330 • Fax: (407) 260-7096 • Toll Free USA: (800) 214-1565
 E-mail: sales@swfsoutheast.com • Web Site: www.swfcompanies.com

