

# APPLICATION & DESIGN

## Bulletin



Volume III, Issue 5

November 2003

### QUICK FACTS

- **Machine:** TF 400V
- **Speed:** Up to 60 trays/minute
- **Industry:** Poultry
- **Application:** Tray forming
- **Design:** Twin cell shipping case
- **Other Applications:** A wide variety of applications including plastic bottles, pouches and soft drinks.



### PRIMARY PACKAGING

SWF Companies—Tisma Division  
1099 Estes Ave.  
Elk Grove Village, IL 60007

Phone: 847-427-9525

Fax: 847-427-9550

### SECONDARY PACKAGING

SWF Companies  
1949 E. Manning Avenue  
P. O. Box 548  
Reedley, CA 93654

Phone: 559-638-8484

Fax: 559-638-7478

[info@swfcompanies.com](mailto:info@swfcompanies.com)  
[www.swfcompanies.com](http://www.swfcompanies.com)

## Twin Cell Shipping Case Provides Additional Stacking Strength

Looking to reduce packaging and associated labor costs, a leading mid-western poultry processor began searching for an alternative to their existing corrugated shipping case.

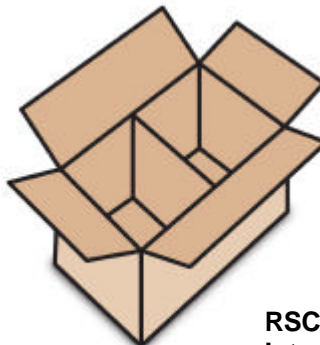
Requiring manual set-up, their existing die-cut box was no longer a viable option to deliver their product to market. Not only was it an expensive case to make, there was just no way manual set-up could match their current, let alone future, packaging requirements.



**Twin Cell Shipping Case**

With the processor's needs in mind, SWF Companies stepped in to provide an automation solution consisting of a TF 400V vertical tray former.

The TF 400V was able to form a twin cell shipping case, from a single piece of C Flute corrugated board. This style ( $13 \frac{1}{2} \times 10 \frac{3}{4} \times 5 \frac{1}{4}$ ) has special inner flap scoring to create a twin cell shipping case, which provides extra stacking strength without adding additional corrugated. After forming and packing (internal dividers are folded by hand, typically during packing), the top flaps are taped close.



**RSC Case with Internal Divider**

An alternate solution for this particular application is an RSC-style case, with a built-in internal divider. Capable of being erected by many different SWF case erectors, including the CE 151, RCS-style cases (with internal dividers) also provide exceptional stacking strength and product protection.

# Innovative Packaging Automation

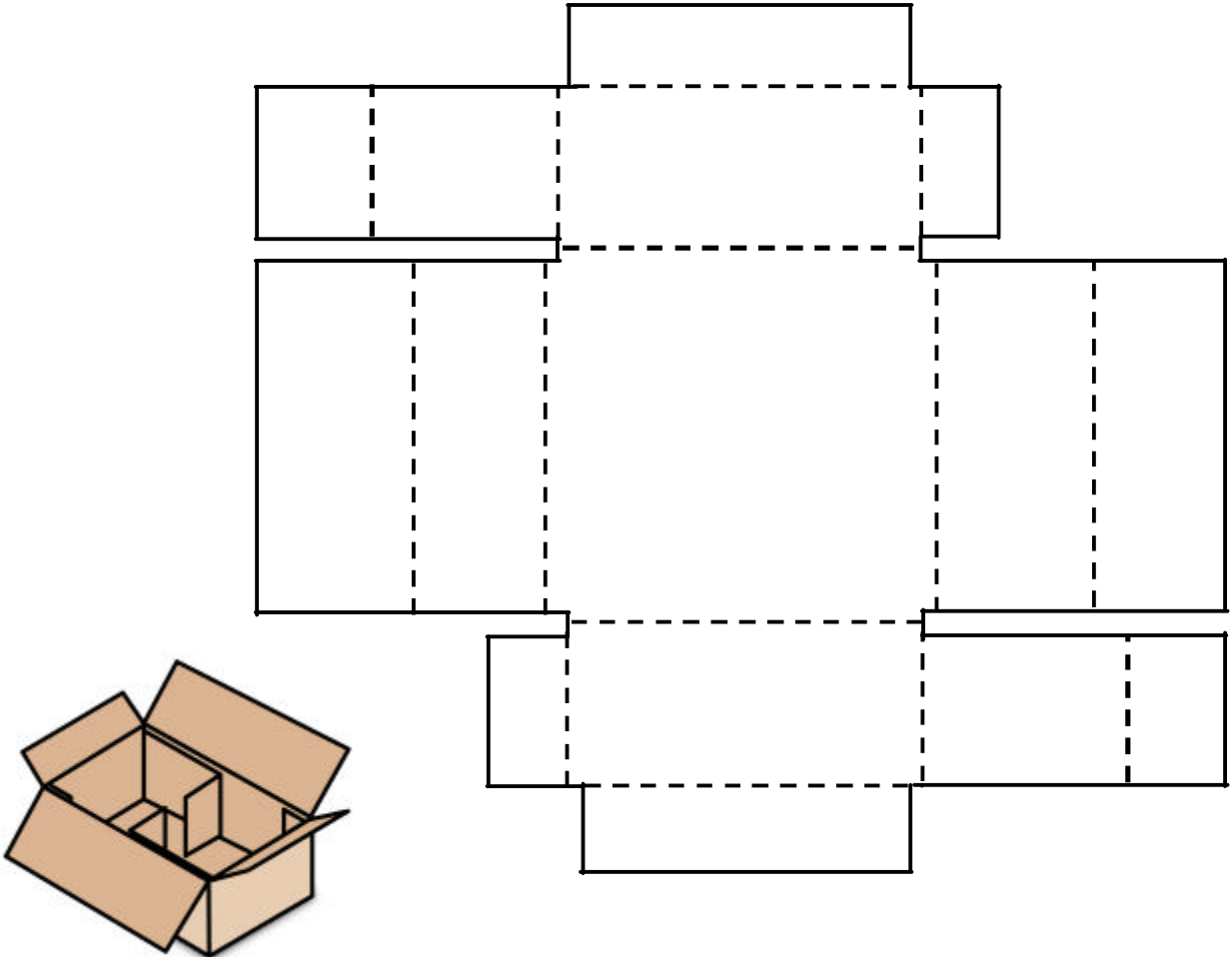


The TF 400V's compact design makes it very portable and easy to move to different production areas. With hundreds of tray designs to choose from, whether it be double corner-post trays (BTB), trays with flaps, triple-ended or leak-proof trays, the TF 400V is ideally suited for most one-piece tray designs.

Simple in design, including a mechanical glue system and no external air requirements, the TF 400V is available with numerous options, allowing the machine to meet the specific needs of each customer. Available options include a vacuum blank feed, large capacity hopper holding up to 400 B-Flute blanks, an automatic lidding attachment that inserts the tray into an HSC cover and large capacity glue pots.

The TF 400V is also available in a Kwik-Change version (TF 400VK) for faster changeovers and a wide base model (TF 600V or VK) is also available to accommodate larger tray designs.

## Twin Cell Blank Layout



Volume III, Issue 5 November 2003

The Application & Design Bulletin is published monthly by SWF Companies, Reedley, CA. If you have any comments or suggestions regarding the Application & Design Bulletin, please contact Joel Anderson or email us at [info@swfcompanies.com](mailto:info@swfcompanies.com).

[www.swfcompanies.com](http://www.swfcompanies.com)