

# APPLICATION & DESIGN

## Bulletin



Volume IV, Issue 8

August 2004

### *QUICK FACTS*

- **Solution:** TF 400V
- **Speed:** Up to 25 cases per minute
- **Industry:** Meat
- **Application:** Case forming
- **Design:** Rolled-End Tray Split Minor
- **Other applications:** Produce, baked goods, prepared foods, etc.

### **PRIMARY PACKAGING**

SWF Companies—Tisma Division  
1099 Estes Ave.  
Elk Grove Village, IL 60007

Phone: 847-427-9525  
Fax: 847-427-9550

### **SECONDARY PACKAGING**

SWF Companies  
1949 E. Manning Avenue  
P. O. Box 548  
Reedley, CA 93654

Phone: 559-638-8484  
Fax: 559-638-7478

### **ROBOTICS**

SWF Companies—GSMA Division  
2730 Kirby Ave., NE Building #5  
Palm Bay, FL 32905

Phone: 321-728-3800  
Fax: 321-728-5555

[info@swfcompanies.com](mailto:info@swfcompanies.com)  
[www.swfcompanies.com](http://www.swfcompanies.com)

## New Package Style and Automation Solution Pays Immediate Dividends

With their existing equipment becoming more and more unproductive and the maintenance costs associated with that equipment ever-escalating, a leading Midwestern meat processor began searching for a way to upgrade their existing case forming operation.

In conjunction with their local corrugated supplier, they sought a reliable partner who could assist them with both an automated forming solution and package style design. In turning to SWF Companies for a solution, they found a match with regards to their requirements for quality workmanship, efficient operation and the production of stronger cases.

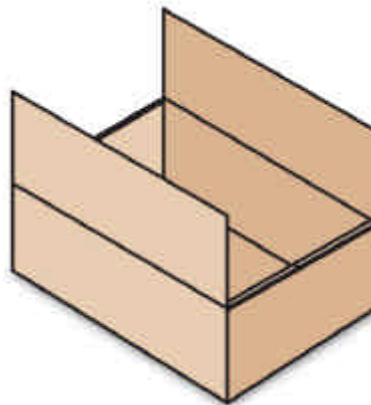
Hoping that a new automated forming solution and package style would lead to an overall reduction of their packaging costs, the company selected SWF Companies' TF 400V tray (case) former to automatically produce Rolled-End Tray Split Minor cases, at speeds between 15-25 cases per minute.

Almost immediately after installation, it was clear that their decision was paying immediate dividends. With the new case design, the processor has realized a corrugated material square footage savings of approximately 5%. It has also been determined that they have reduced

hott melt glue usage by more than 30%, due to the new case design.

With an increase in stacking strength of 8%, the company has also experienced improved product marketability by reducing case and product damage prior to delivery.

All told, this processor has achieved an overall savings of nearly \$40,000 per year by moving to the SWF automation solution and new package style.



**Rollled-End  
Tray Split Minor**

# Innovative Packaging Automation



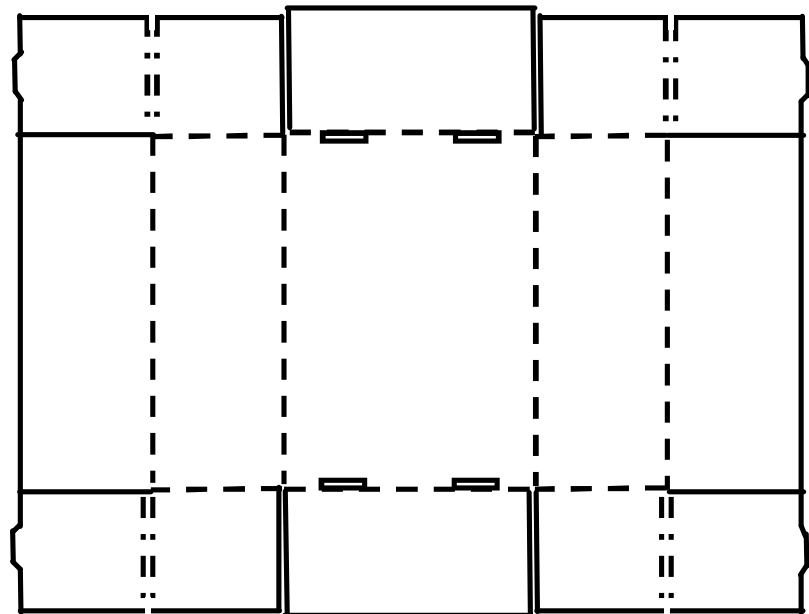
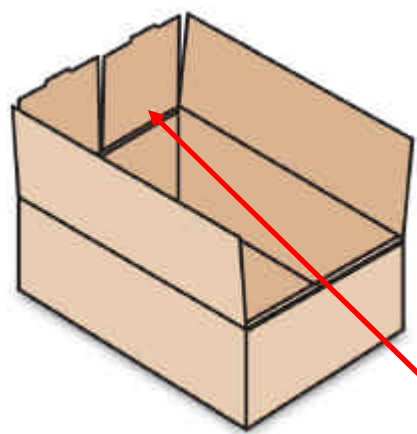
TF 400V

The TF 400V's compact design makes it very portable and easy to move to different production areas. With hundreds of tray designs to choose from, whether it be double corner-post trays (BTB), trays with flaps, triple-ended or leak-proof trays, the TF 400V is ideally suited for most one-piece tray designs.

Simple in design, including a mechanical glue system and no external air requirements, the TF 400V is available with numerous options, allowing the machine to meet the specific needs of each customer. Available options include a vacuum blank feed, large capacity hopper holding up to 400 B-Flute blanks, an automatic lidding attachment that inserts the tray into an HSC cover and large capacity glue pots.

The TF 400V is also available in a Kwik-Change version (TF 400VK) for faster changeovers and a wide base model (TF 600V or VK) is also available to accommodate larger tray designs.

## Rolled-End Tray Split Minor Layout



Rolled-End Tray Split Minor  
(shown with minor flaps open)

