

APPLICATION & DESIGN

Bulletin



Volume V, Issue 1

January 2005

QUICK FACTS

- **Solution:** Victory 100
- **Speed:** Up to 200 cartons per minute (with automated loading)
- **Industry:** Contract packers, health, beauty and pharmaceutical products, automotive, food, etc.
- **Application:** Vertical carton erecting, loading and sealing

PRIMARY PACKAGING

SWF Companies—Tisma Division
1099 Estes Ave.
Elk Grove Village, IL 60007

Phone: 847-427-9525
Fax: 847-427-9550

SECONDARY PACKAGING

SWF Companies
1949 E. Manning Avenue
P. O. Box 548
Reedley, CA 93654

Phone: 559-638-8484
Fax: 559-638-7478

ROBOTICS

SWF Companies—GSMA Division
2730 Kirby Ave., NE Building #5
Palm Bay, FL 32905

Phone: 321-728-3800
Fax: 321-728-5555

info@swfcompanies.com
www.swfcompanies.com

Victory 100 Finds Success Across Broad Spectrum of Applications

With its introduction just over a year ago, Tisma's Victory 100 vertical carton-ing platform has proved to be a versatile system time and time again.

A truly S.A.F.E. packaging solution (Simple, Affordable, Flexible and Ergonomic), the Victory 100, in its most basic form, is a hand-load vertical cartoner

with space to accommodate two manual loading stations. Recent packaging applications utilizing the Victory 100 as a hand-load solution include automotive parts, prepared meats, vitamin bottles, tea bags and cleaning sponges.

As a fully automated machine, the Victory 100 was recently installed as an automatic bottle loader—forming, loading and sealing an eight-sided carton containing a topical ointment. This particular solution also included an optional coupon/leaflet inserter prior to bottle loading (see photo below) and a unique flap folding sequence.



The Victory 100's optional gripper track picks up the individual bottles and loads them into the formed carton. Coupon is dispensed prior to loading and carton closing.

Between these vastly different applications, there have been numerous other vertical cartoning solutions showcasing the versatility of the Victory 100. Not only can the Victory 100 run various products, it also accommodates multiple carton sizes, carton styles and numerous load-

Continued on Next Page....

Innovative Packaging Automation

Continued From Previous Page....

ing options to ultimately meet the end user's packaging automation requirements.

A prime example of the Victory 100's loading options, is a recent system which incorporated robotic loading of hair care kits.

A standard Victory 100 was slightly modified to erect and bottom seal a carton. The major flaps of the carton were opened (pictured, right) and discharged onto a long, flighted conveyor belt which served as the staging area for 6 robot loaders. As the open carton traveled along the conveyor, each robot station picked and placed a different item into the hair care kit.

Once the cartons are filled, a remotely located



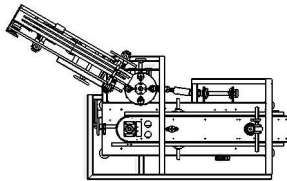
The Victory 100 discharges newly formed cartons and opens major flaps prior to robotic loading. Carton sealing occurs downstream, inline, after loading.

(downstream) Tisma sealer, top seals the cartons via hot-melt glue.

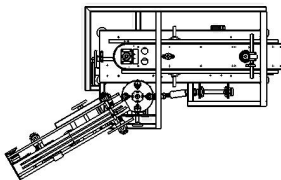
Modular, Menu Driven Construction:

The Victory 100 is designed with quick delivery in mind, while also enabling a level of customization often needed to meet a customer's exact requirements. This modular, menu driven approach still allows 4 to 6 week delivery, but each Victory 100 can include the following features:

Left-Hand Designs:



Right-Hand Designs:



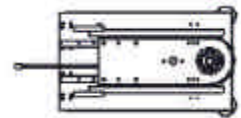
Carton Filling:

- Hand-Load
- Volumetric
- Net-Weigh Scale
- Robotic

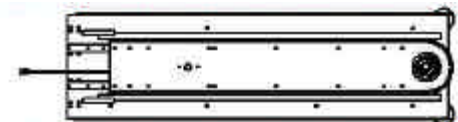
Electronics/Controls:

- Siemens
- Omron
- Allen-Bradley
- Yaskawa

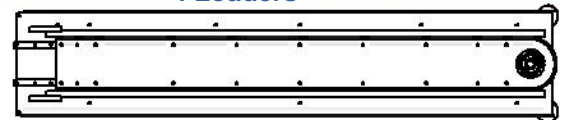
Ergonomic Loading Options:



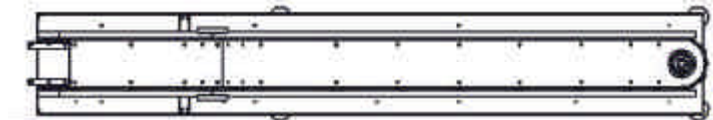
2 Loaders



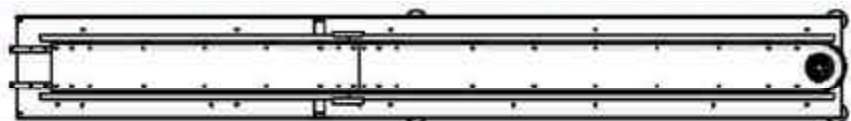
4 Loaders



6 Loaders



8 Loaders



10 Loaders



Volume V, Issue 1

January 2005

The Application & Design Bulletin is published monthly by SWF Companies, Reedley, CA. If you have any comments or suggestions regarding the Application & Design Bulletin, please contact Joel Anderson or email us at info@swfcompanies.com.

www.swfcompanies.com