

# APPLICATION & DESIGN

## Bulletin



Volume V, Issue 3

March 2005

### QUICK FACTS

- **Solution:** BF 400VK
- **Speed:** Up to 30 packages per minute
- **Industry:** Candy
- **Application:** Vertical bliss case forming
- **Design:** Bliss display shipper with rolled sides and display ends.

### PRIMARY PACKAGING

SWF Companies—Tisma Division  
1099 Estes Ave.  
Elk Grove Village, IL 60007

Phone: 847-427-9525  
Fax: 847-427-9550

### SECONDARY PACKAGING

SWF Companies  
1949 E. Manning Avenue  
P. O. Box 548  
Reedley, CA 93654

Phone: 559-638-8484  
Fax: 559-638-7478

### ROBOTICS

SWF Companies—GSMA Division  
2730 Kirby Ave., NE Building #5  
Palm Bay, FL 32905

Phone: 321-728-3800  
Fax: 321-728-5555

[info@swfcompanies.com](mailto:info@swfcompanies.com)  
[www.swfcompanies.com](http://www.swfcompanies.com)

## Leading Candy Producer Enjoys Sweet Savings with New Bliss Case

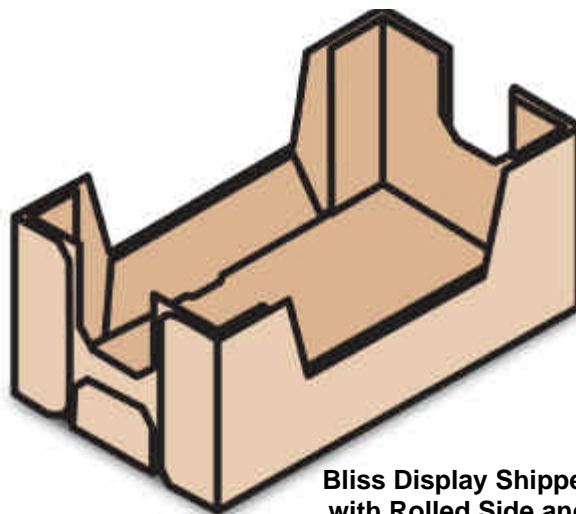
Dissatisfied with their existing shipping container, a prominent South-eastern United States candy processor began to search for a way to reduce labor and container costs associated with this package.

Originally, the processor was manually forming a half-slotted-container (HSC), inserting a full depth collar and then a separate internal divider. In searching for an alternate package design, their goals included reducing packaging costs and improving packaging efficiency without compromising the structural rigidity of the container.

After reviewing several package alternatives, this particular processor ultimately decided on a single cell bliss case with an open top design, roll sides and display ends. Automatically formed on SWF Companies' BF 400VK vertical bliss case former, this single cell bliss case is comprised of a C-flute body wrap and B/C-flute double wall end panels.

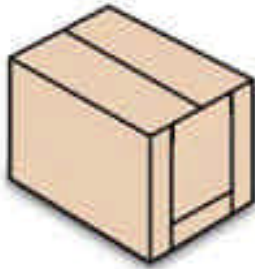
The BF 400VK, with Kwik-changeover features, forms two bliss case sizes: 14" X 12 1/2" X 9 3/8" and 19" X 13" X 8". Each case has internal and external flanges measuring two inches in length.

The move to this style of bliss case has reduced their square footage of corrugated board used by more than 30%, while maintaining the required performance. Furthermore, the new style has substantially reduced packaging costs by automating the forming of their display shipping cases.



Bliss Display Shipper  
with Rolled Side and  
Display Ends

# Innovative Packaging Automation



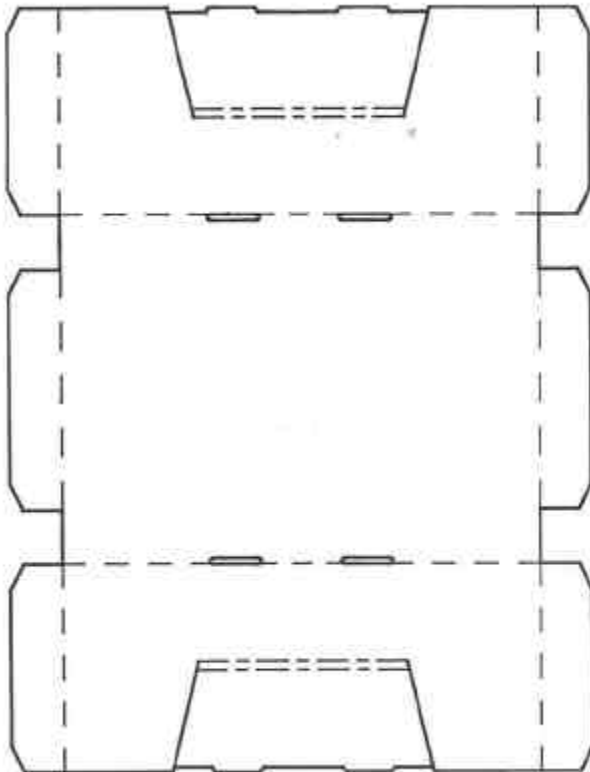
SWF Companies' compact and portable BF 400V Bliss-Matic automatically forms hundreds of bliss case styles at speeds up to 2100 cases/hour.

The BF 400V features a purely mechanical design and requires only 30 minutes for changeovers. Where faster changeovers are required, SWF offers a "Kwik-Change" model (BF 400VK), which can be changed over in under 15 minutes. Furthermore, a wide base model (BF 600V or VK) is also available to accommodate larger bliss case designs.

A variety of attachments and add-ons are also available to increase the versatility of the BF 400V. These include an automatic HSC lidding attachment, rollover display feature and depending upon how much stacking strength a shipping case requires, internal flange and diagonal corner attachments.



## Body Blank



## End Panels (2)



Bliss Display Shipper  
with Rolled Side and  
Display Ends

