

# APPLICATION & DESIGN

## Bulletin



Volume V, Issue 6

June 2005

### *QUICK FACTS*

- **Machine:** BF 600V
- **Speed:** 25 bliss cases/minute
- **Industry:** Chemical
- **Design:** Single-cell bliss case with large internal flange
- **Other Applications:** Any industry/application requiring significant stacking strength (due to product weight), improved product protection and looking to replace RSC cases

### **PRIMARY PACKAGING**

SWF Companies—Tisma Division  
1099 Estes Ave.  
Elk Grove Village, IL 60007

Phone: 847-427-9525  
Fax: 847-427-9550

### **SECONDARY PACKAGING**

SWF Companies  
1949 E. Manning Avenue  
P. O. Box 548  
Reedley, CA 93654

Phone: 559-638-8484  
Fax: 559-638-7478

### **ROBOTICS**

SWF Companies—GSMA Division  
2730 Kirby Ave., NE Building #5  
Palm Bay, FL 32905

Phone: 321-728-3800  
Fax: 321-728-5555

[info@swfcompanies.com](mailto:info@swfcompanies.com)  
[www.swfcompanies.com](http://www.swfcompanies.com)

## Chemical Producer Sees Many Benefits with New Bliss Case

Faced with escalating labor costs and unacceptable product loss during storage and shipment, a major chemical and herbicide producer (located in the Southeastern United States) was in desperate need of a new secondary packaging solution.

Originally, they were manually forming a conventional RSC (regular slotted container) with a special two-cell single piece full case liner/insert. The RSC case and insert were "intended" to protect two (2 1/2 gallon jugs) of herbicide during long term storage and shipment. However, the weight of the product caused significant damage to the case and with stringent governmental regulations on the shipment of chemicals, they were often faced with the inability to ship their product across state lines due to the lost package integrity.

With the purchase of SWF Companies' BF 600V vertical bliss case former and the switch to a single-cell bliss case with 5" (127mm) internal flanges and 2" (51mm) external flanges, square footage of corrugated usage has decreased by more than 30%, manual forming was eliminated, while product protection and stacking strength were improved.



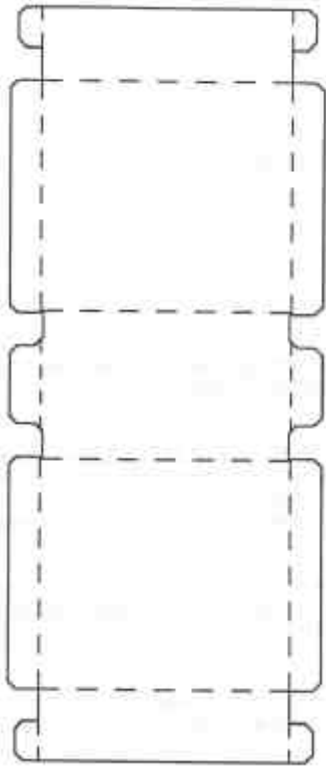
The packed bliss cases are column stacked four high on deck board pallets. This allows for maximum compression performance of the formed bliss cases. The pallets are film wrapped and stacked two to three high during storage.

The bliss case has 275 pound C-Flute body wrap and double wall end panels. The two 2 1/2 gallon bliss case size is 15 1/8" X 9" X 14 3/4" (384 X 229 X 375 mm). Layout and perspective drawings are shown on the reverse side of this page.

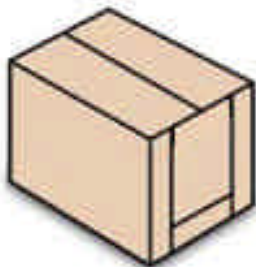
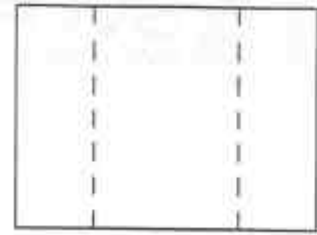
Continued on Next Page....

# Innovative Packaging Automation

## Body Blank



## End Panels (2)



SWF Companies' compact and portable BF 400V Bliss-Matic automatically forms hundreds of bliss case styles at speeds up to 2100 cases/hour.

The BF 400V features a purely mechanical design and requires only 30 minutes for changeovers. Where faster changeovers are required, SWF offers a "Kwik-Change" model (BF 400VK), which can be changed over in under 15 minutes. Furthermore, a wide base model (BF 600V or VK) is also available to accommodate larger bliss case designs.

A variety of attachments and add-ons are also available to increase the versatility of the BF 400V. These include an automatic HSC lidding attachment, rollover display feature and depending upon how much stacking strength a shipping case requires, internal flange and diagonal corner attachments.



Volume V, Issue 6

June 2005

The Application & Design Bulletin is published monthly by SWF Companies, Reedley, CA. If you have any comments or suggestions regarding the Application & Design Bulletin, please contact Joel Anderson or email us at [info@swfcompanies.com](mailto:info@swfcompanies.com).

[www.swfcompanies.com](http://www.swfcompanies.com)