

# APPLICATION & DESIGN

## Bulletin



Volume V, Issue 7

July 2005

### *QUICK FACTS*

- **Machine:** TF 400V
- **Speed:** 25 trays / minute
- **Industry:** Produce
- **Design:** End slotted tray with outside flaps and HSC lid
- **Other Applications:** Applications requiring increased product protection and potentially in need of a display-ready tray. Alternative to RSC cases.

### **PRIMARY PACKAGING**

SWF Companies—Tisma Division  
1099 Estes Ave.  
Elk Grove Village, IL 60007

Phone: 847-427-9525  
Fax: 847-427-9550

### **SECONDARY PACKAGING**

SWF Companies  
1949 E. Manning Avenue  
P. O. Box 548  
Reedley, CA 93654

Phone: 559-638-8484  
Fax: 559-638-7478

### **ROBOTICS**

SWF Companies—GSMA Division  
2730 Kirby Ave., NE Building #5  
Palm Bay, FL 32905

Phone: 321-728-3800  
Fax: 321-728-5555

[info@swfcompanies.com](mailto:info@swfcompanies.com)  
[www.swfcompanies.com](http://www.swfcompanies.com)

## New Tray Style with HSC Cover Eliminates Manual Case Erecting

Mounting labor costs and limited production capabilities recently forced a leading Northwestern U.S. processor of glazed fruit to search for alternate packaging solution.

Originally, this processor was manually forming a corrugated case with RSC (Regular Slotted Container) top flaps and AFM (All Flaps Meet) bottom flaps (which were taped closed). However, their production demands were quickly over-taxing their existing labor pool and adding additional manpower didn't make financial sense.

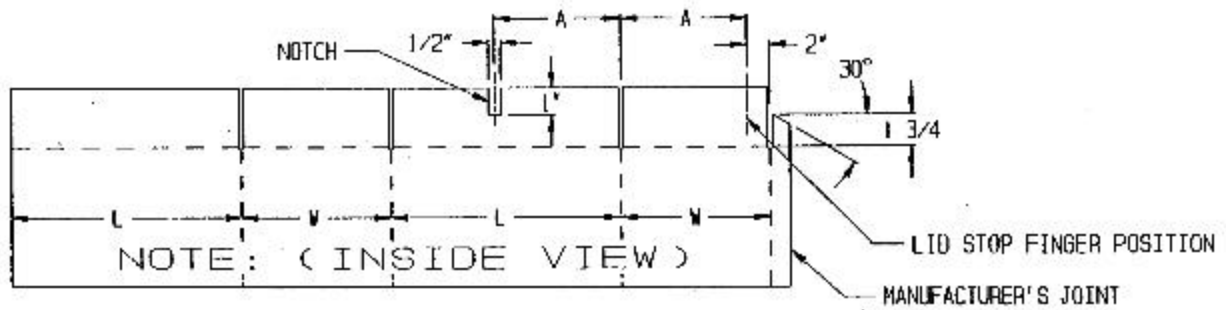
As a result, their search led them to select a two-piece shipping case formed on an SWF TF 400V vertical tray former. The TF 400V automatically forms a "box" design consisting of an end-slotted tray with outside glue flaps (for a smooth interior and solid bottom) and a full depth HSC (Half Slotted Container) cover. The package sizes being formed are 14 7/8" X 10 7/8" X 6 7/8" and 5 3/4" (378 X 276 X 175 mm) and (378 X 276 X 146 mm). All components are C-Flute.

With each machine cycle, the tray is formed and then automatically inserted into the HSC cover by SWF's automatic HSC lidding attachment. The completed box is then discharged to the packing line.

A polybag is inserted into each box, before 30 pounds of glazed fruit (whole, halved, crushed or ringed) is poured into the bag. After filling, the bag is closed by folding over the excess materials. The filled case is then conveyed through an automatic top taper, palletized and then delivered to bakeries and other institutions by truck.

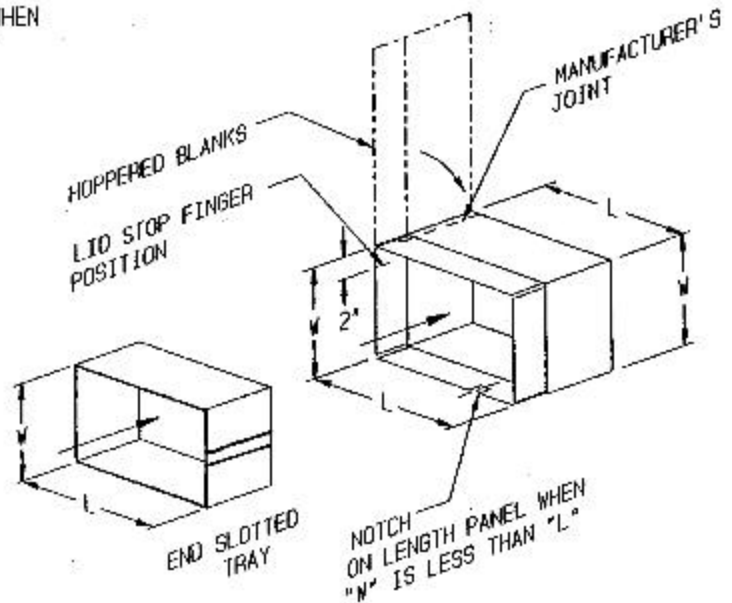
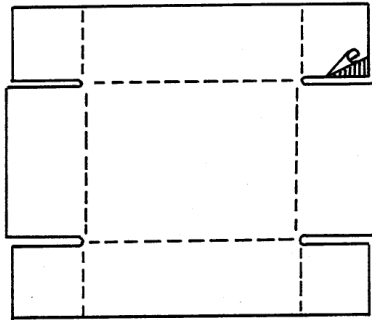


# Innovative Packaging Automation



NOTCH ON LENGTH PANEL WHEN  
 "W" IS LESS THAN "L"  
 END SLOTTED TRAY  
 END BLISS  
 $A=W-2$

## Tray Blank Layout



The TF 400V's compact design makes it very portable and easy to move to different production areas. With hundreds of tray designs to choose from, whether it be double corner trays (BTB), trays with flaps, triple-ended or leak-proof trays, the TF 400V is ideally suited for most one-piece tray designs.

Simple in design, including a mechanical glue system and no external air requirements, the TF 400V is available with numerous options, allowing the machine to meet the specific needs of each customer. Available options include a vacuum blank feed, large capacity hopper holding up to 400 B-Flute blanks, an automatic lidding attachment that inserts the tray into an HSC cover (see picture, right) and large capacity glue pots.

The TF 400V is also available in a Kwik-Change version (TF 400VK) for faster changeovers and a wide base model (TF 600V or VK) is also available to accommodate larger tray designs.

