

APPLICATION & DESIGN

Bulletin



Volume V, Issue 9

September 2005

QUICK FACTS

- **Machine:** BF 400 & 600V
- **Speed:** 25 bliss cases/minute
- **Industry:** Various
- **Design:** Diagonal Corner Side Bliss with Side Flange Seal & Diagonal Corner End Bliss
- **Applications:** Applications requiring significant stacking strength (due to weight), improved product protection and looking to replace RSC cases

PRIMARY PACKAGING

SWF Companies—Tisma Division
1099 Estes Ave.
Elk Grove Village, IL 60007

Phone: 847-427-9525
Fax: 847-427-9550

SECONDARY PACKAGING

SWF Companies
1949 E. Manning Avenue
P. O. Box 548
Reedley, CA 93654

Phone: 559-638-8484
Fax: 559-638-7478

ROBOTICS

SWF Companies—GSMA Division
2730 Kirby Ave., NE Building #5
Palm Bay, FL 32905

Phone: 321-728-3800
Fax: 321-728-5555

info@swfcompanies.com
www.swfcompanies.com

Bliss Cases Find Applications Outside of Traditional Industries

Corrugated packaging, specifically the bliss case, has traditionally been associated with the produce and poultry industries. Numerous design options enable these “packages” to accommodate a wide variety of fruits, vegetables and fresh/frozen poultry products.

With the advent of “club stores” and other changes in the way all goods are bought and sold, packaging requirements have changed. The standard RSC (regular slotted container) case does not meet many of these new requirements. The bliss case, on the other hand, does.

Display-ready, ability to withstand repeated handling, humidity resistant, high stacking strength, economical and automated forming are just some of the packaging requirements that a bliss case fulfills.

Specifically, a bliss design that meets these stringent requirements is the corner post bliss case. The unique diagonal corners increase the case's top to bottom stacking strength and reduce box twisting or racking during handling. When formed, all box walls and corner posts have vertical flutes providing maximum support. Both sides of each corner are double laminated, giving added strength and durability to the case.

The corner post bliss box may be an “end” or “side” bliss (see back page for general layouts). The end or side bliss components can be of different board grades than the bliss body wrap. Board strengths can be altered for climatic changes and market requirements.

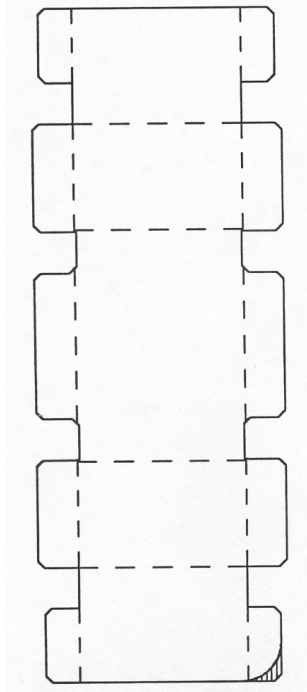


The corner post bliss box is formed on SWF Companies' BF 400V (left). The forming mandrel is altered to conform to the octagonal (8-sided) interior of the formed box. Special gluing patterns assure positive bonding of the exterior and interior diagonal corner flanges.

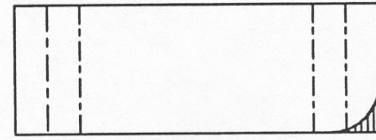
Applications for these bliss designs include beverage bottles, pails of joint compound, paint cans, bags of candy, household cleaning supplies, dairy products in tapered cups and much more.

Innovative Packaging Automation

Diagonal Corner Side Bliss with Side Flange Seal



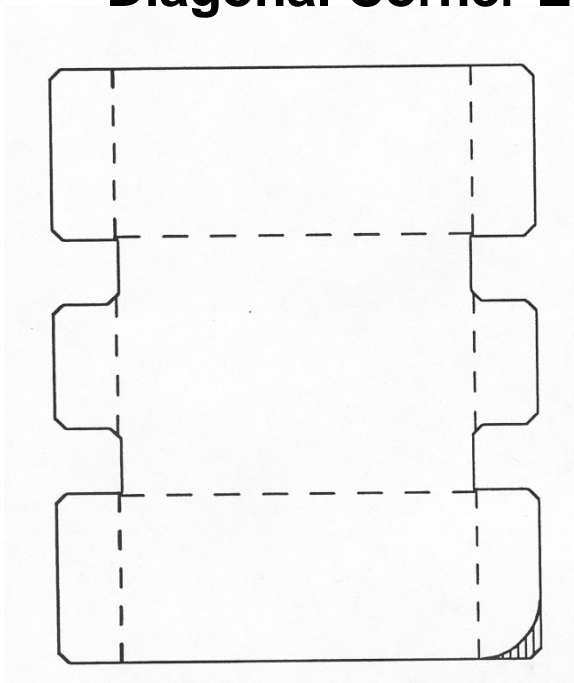
Body Blank



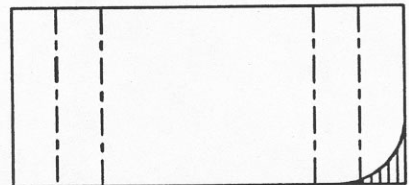
Side Panels (2)



Diagonal Corner End Bliss (no top flaps)



Body Blank



End Panels (2)

